



**IS** SERIES

**High-Definition Digital Imaging  
For Scientific Applications**



## Features

- 3MP, 5MP or 10MP Models
- Up To 3856 x 2764 Resolution
- High Speed USB 2.0 Interface
- ½" or 1/2.5" CMOS Image Sensors
- Live Image Analysis
- Still and Video Capture Modes
- Automatic Exposure & White Balance
- 8-Bit A/D Converter
- ISCapture Software

**VAN GUARD**<sup>®</sup>  
INFINITE ♦ SOLUTIONS

**“High-definition live images and video for the documentation & archival of clinical, life science and material science laboratory analysis.”**

## IS-Series High Definition Digital Imaging

The IS-Series digital cameras from VanGuard produce high definition live images and video for the documentation and archival of clinical, life science, and material science laboratory imaging analysis. With resolution up to 3856 X 2764 and the included ISCapture software, the IS Series cameras are a perfect match for many scientific application.

Equipped with ½” 1/2.5”, or 1/2.3” CMOS image sensors, VanGuard IS-Series digital cameras deliver exacting image clarity and color. The on-chip 8 bit A/D converter is capable of operating at up to 40fps.

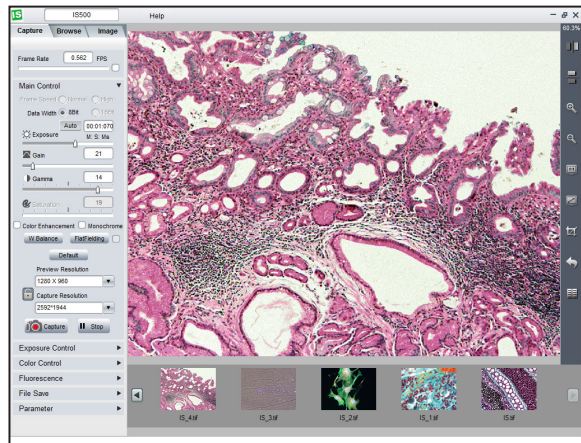
In addition, IS-Series digital cameras come standard with the following features: still & video capture modes, automatic/manual exposure control, manual gamma control, and automatic/manual white balance control.

The compact design and standard C-mount lens adapter of the IS-Series cameras allows them to be easily installed on essentially any microscope with an existing camera port or available eyetube.

Also, no separate power cable is required for the IS-Series cameras; video, power and full camera control are all enabled within a single USB cable.

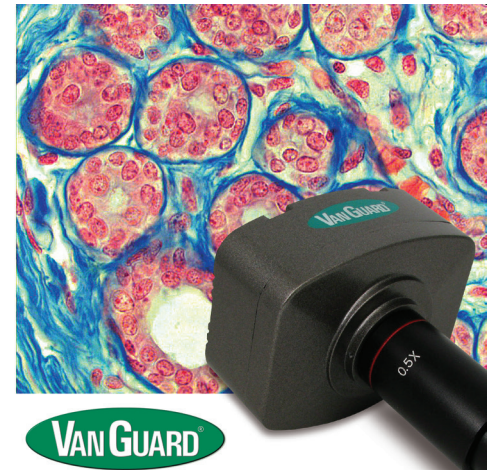
The full-featured ISCapture imaging software allows the user to easily control all of the camera’s advanced settings and has a simple but powerful graphic interface. Full capture solutions are included to provide the user with the ultimate in live image analysis and archival.

Go with a name you can trust for high level in digital imaging...choose VanGuard.



## Technical Specifications

	IS300	IS500	IS1000
Sensor	Micron	Micron	Micron
Sensor Type	MT9T001	MT9P031	MT9J001
Image Sensor	½” CMOS	1/2.5” CMOS	1/2.3” CMOS
Megapixels	3	5	10
Pixel Size	3.2µm x 3.2µm	2.2µm x 2.2 µm	1.67µm x 1.67 µm
Digital Output	24-Bit	24-Bit	24-Bit
Active Pixels	2048 x 1536	2592 x 1944	3856 x 2764
Frame Rate	2048 x 1536: 12fps	2592 x 1944: 5fps	3856 x 2764: 3fps
	1024 x 768: 25fps	1280 x 960: 21fps	1832 x 1370: 8fps
	640 x 480: 40fps	1024 x 768: 25fps	1280 x 1024: 25fps
	--	640 x 480: 38fps	916 x 680: 28fps
Operating Temperature	0-6° C	0-60°C	0-60°C
Sensitivity	1.0 V/Lux-S (550nm)	0.53 V/Lux-S (550nm)	0.44 V/Lux-S (550 nm)
S/N Ratio	>43dB	>40.5dB	>40.5dB
Dynamic Range	54dB	60dB	66.5dB
Capture Mode	Still & Video Color	Still & Video Color	Still & Video Clor
Scanning Method	Progressive	Progressive	Progressive
Exposure	Automatic / Manual	Automatic / Manual	Automatic / Manual
White Balance	Automatic / Manual	Automatic / Manual	Automatic / Manual
Gamma	Automatic / Manual	Automatic / Manual	Automatic / Manual
Signal (Video & Control)	USB 2.0	USB 2.0	USB 2.0
Specialized Mode	Fluorescence	Fluorescence	Fluorescence
Lens Mount	C / CS Mount	C / CS Mount	C / CS Mount
Adapter Lens	0.50X	0.45X	0.45X
Adapters (Included)	23mm, 30mm, & 30.5 mm	23mm, 30mm, & 30.5 mm	23mm, 30mm, & 30.5 mm
Data Interface	USB 2.0	USB 2.0	USB 2.0
Twain Compatible	Yes	Yes	Yes
Capture Software Suite	ISCapture	ISCapture	ISCapture
Power Requirement	USB 2.0 / 3.0 Bus	USB 2.0 / 3.0 Bus	USB 2.0 / 3.0 Bus
Dimensions (Body)	70 (L) x 85 (W) x 45 (H) mm	70 (L) x 85 (W) x 45 (H) mm	70 (L) x 85 (W) x 45 (H) mm
Weight	0.2 kg	0.2 kg	0.2 kg
Supplied With	USB 2.0 Cable & ISCapture Software Installation CD	USB 2.0 Cable & ISCapture Software Installation CD	USB 2.0 Cable & ISCapture Software Installation CD



### ISCapture Software Suite

Note: compatible with:  
Win 7 (32/64-bit) &  
Win 8 (32/64-bit)

## Ordering Information

Cat No.	Camera Type	Camera Model	For Microscope Models
1400-CDPC-10	USB Digital Camera, 10 Megapixels	IS1000	1113AM's, 1115AM's, 1210's, 1220's, 1300's, 1420's, 1430's, 1480's, 1490's
1200-CDPC-10	USB Digital Camera, 10 Megapixels	IS1000	1230's, 1240's 1280's 1290's 1442MMi
1200-ZDPC-10	USB Digital Camera, 10 Megapixels	IS1000	1200Z's
1100-ZDPC-10	USB Digital Camera, 10 Megapixels	IS1000	1100Z's
1400-CDPC-5	USB Digital Camera, 5 Megapixels	IS500	1113AM's, 1115AM's, 1210's, 1220's, 1300's, 1420's, 1430's, 1480's, 1490's
1200-CDPC-5	USB Digital Camera, 5 Megapixels	IS500	1230's, 1240's 1280's 1290's 1442MMi
1200-ZDPC-5	USB Digital Camera, 5 Megapixels	IS500	1200Z's
1100-ZDPC-5	USB Digital Camera, 5 Megapixels	IS500	1100Z's
1400-CDPC-3	USB Digital Camera, 3 Megapixels	IS300	1113AM's, 1115AM's, 1210's, 1220's, 1300's, 1420's, 1430's, 1480's, 1490's
1200-CDPC-3	USB Digital Camera, 3 Megapixels	IS300	1230's, 1240's, 1280's, 1290's, 1442MMi
1200-ZDPC-3	USB Digital Camera, 3 Megapixels	IS300	1200Z's
1100-ZDPC-3	USB Digital Camera, 3 Megapixels	IS300	1100Z's



**VEE GEE Scientific, Inc.**

13600 NE 126th Place, Suite A • Kirkland, WA 98034  
(800) 423-8842 • (425) 823-4518 • Fax: (425) 820-9826  
www.veege.com • email: sales@veege.com

No.VGBR121614IS  
Printed in the USA