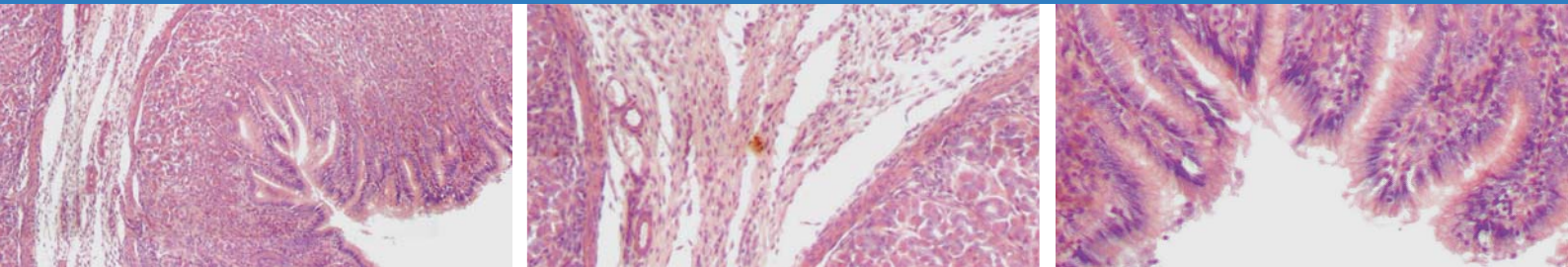


Meiji Techno MT5000 (DSS)

Digital slide scanners



Fast scanning. Capturing the image of complete slide area

For digital pathology, research and education

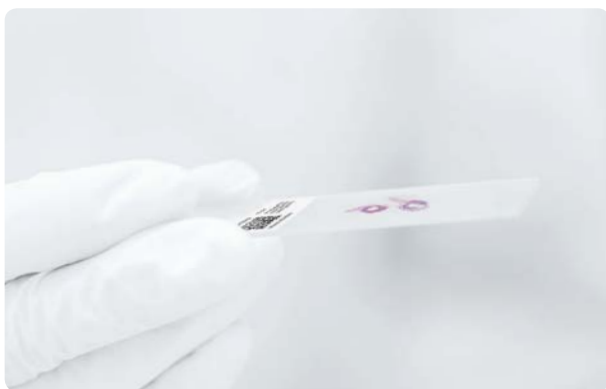
Simultaneous loading from 1 to 4 slides

Creating virtual sample

Focus: automatic, extended, range

Plan Apochromat objectives

Immersion scanning with high definition (optional)



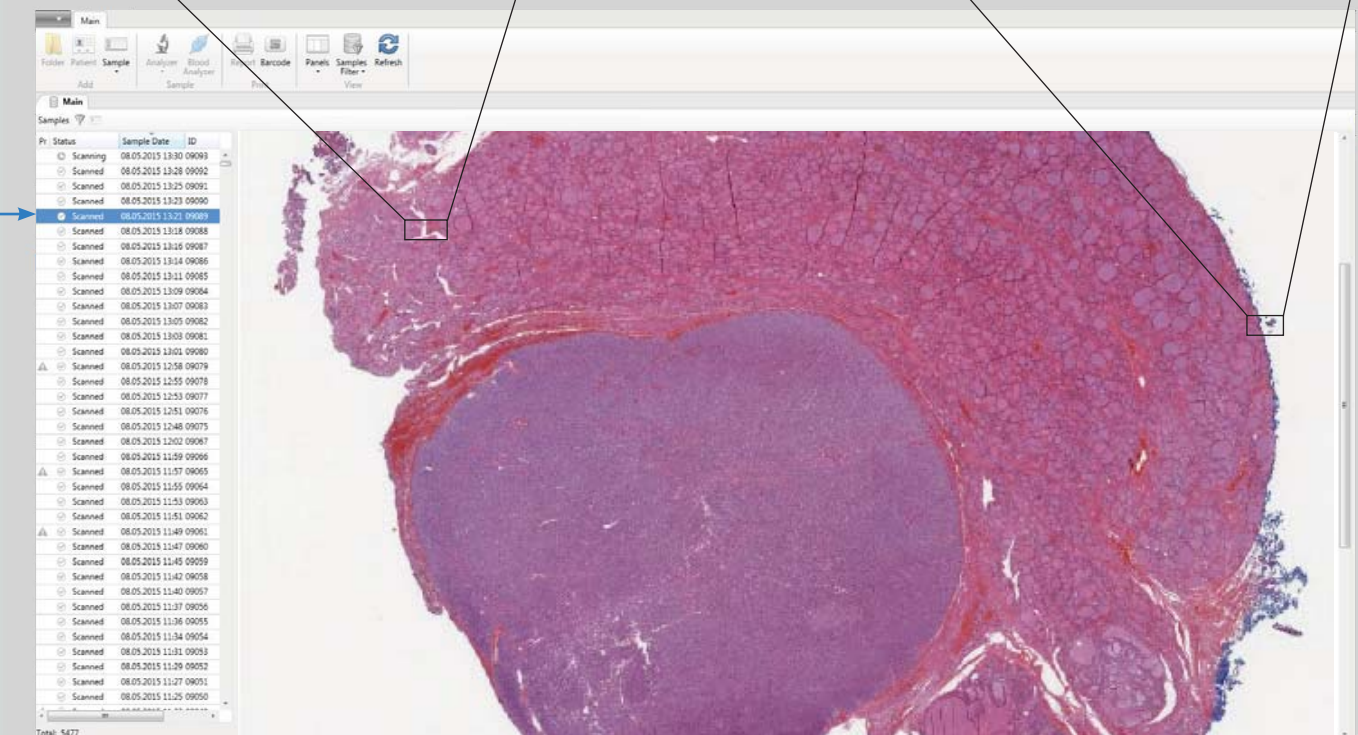
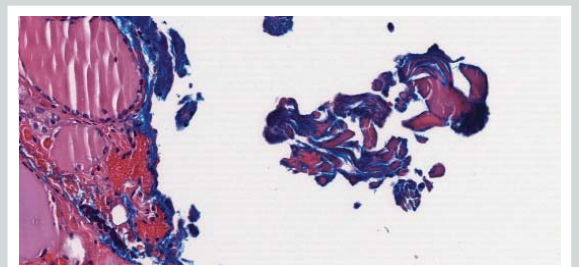
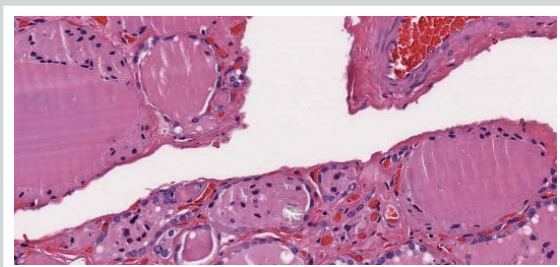
Works with standard
75x25 mm slides



Perfect image quality

Made in Japan
5 Year Warranty

Convert your glass slides into digital data

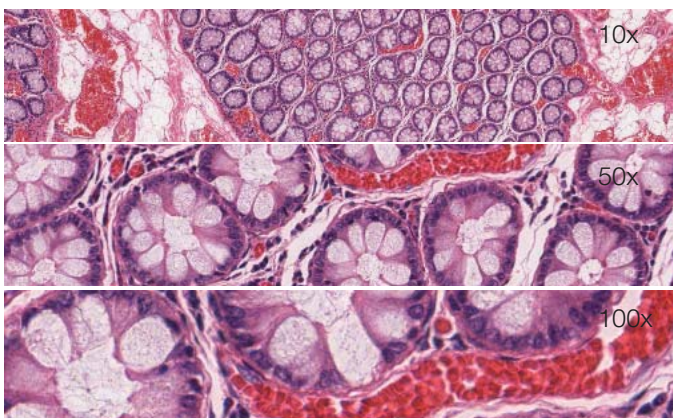


Main features

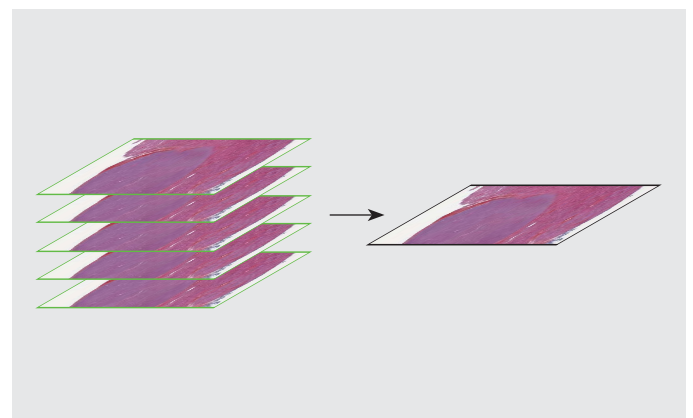


Panoramic images of complete slide area

Creation of high quality digital slides. Exceptional quality, high definition and accurate color rendition thanks to Plan Apochromat objectives.

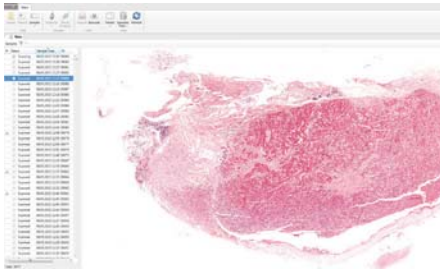


Additional magnifications

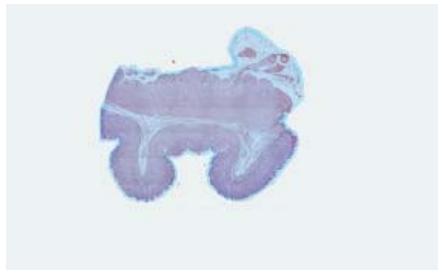


Extended focus

Software



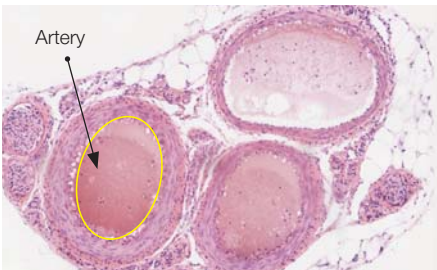
Database for archive management



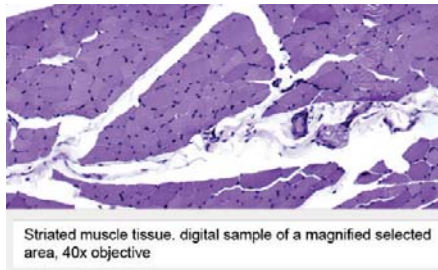
Autodetection of scanning area



Adjustable size of scanning area



Working with images: select, edit, marks and text comments



Comments to digital sample image



Education and professional development

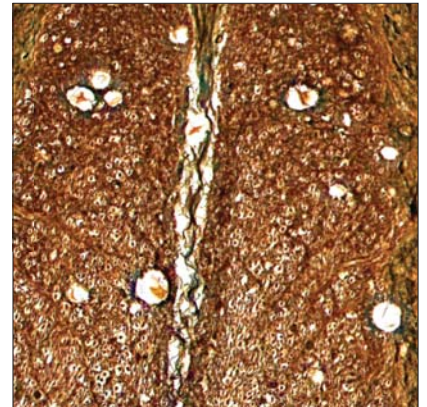


Telemedicine and remote consultations

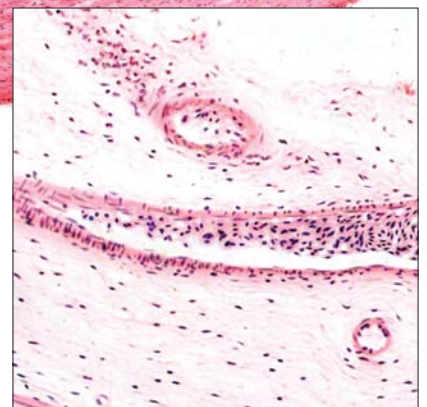


Remote access

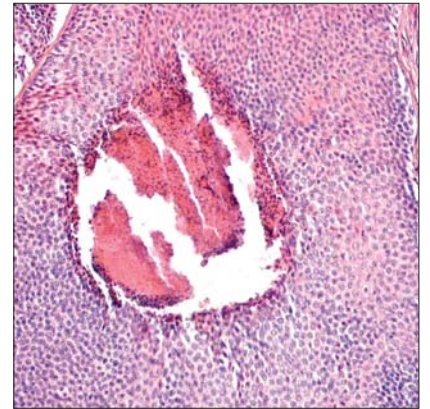
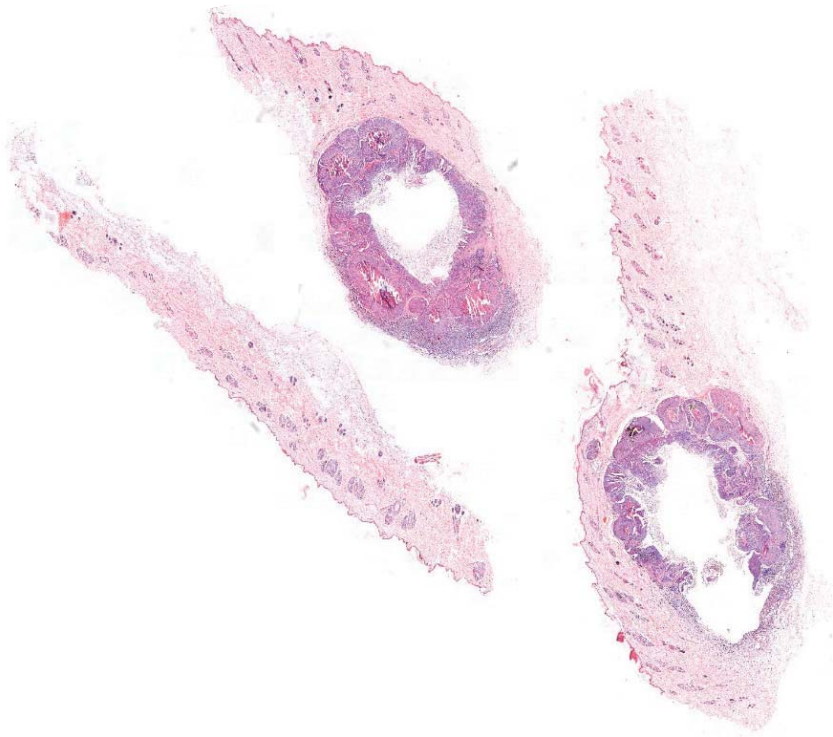
Examples of digital slides



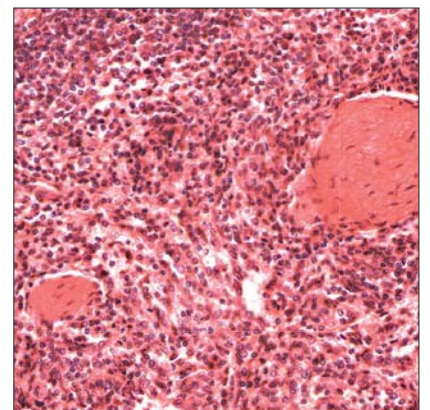
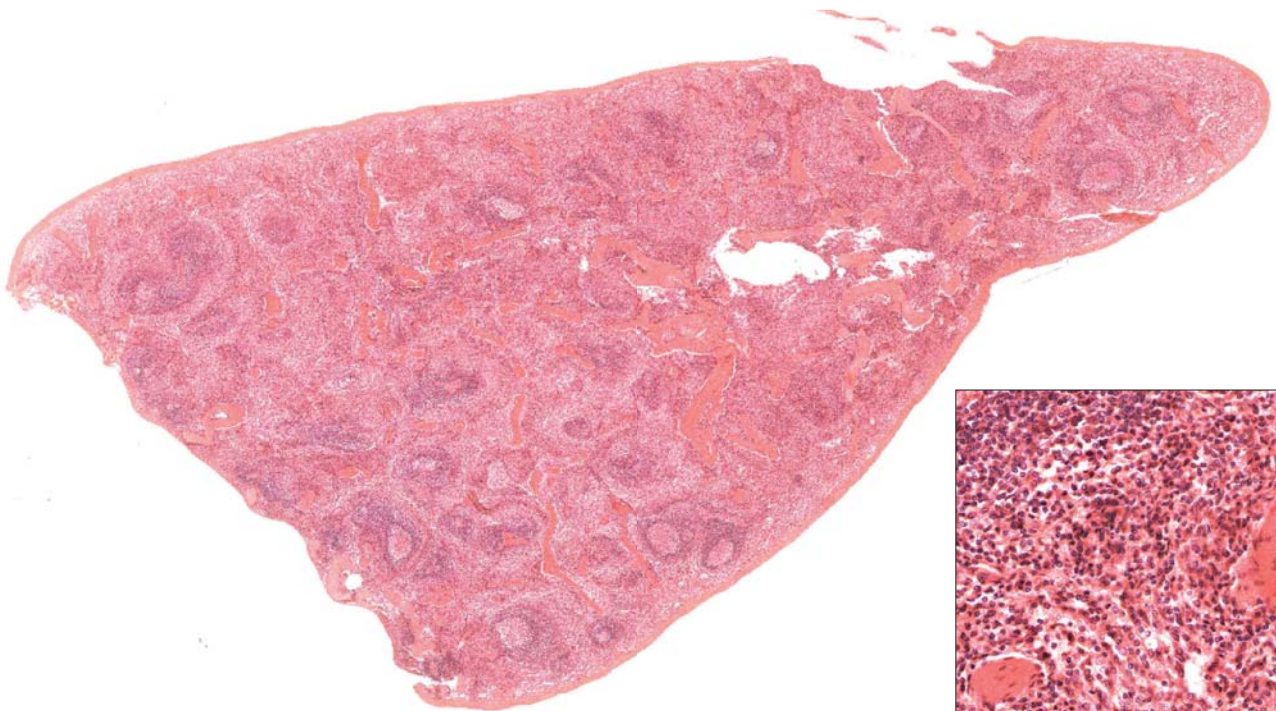
Spinal cord



Muscular tissue

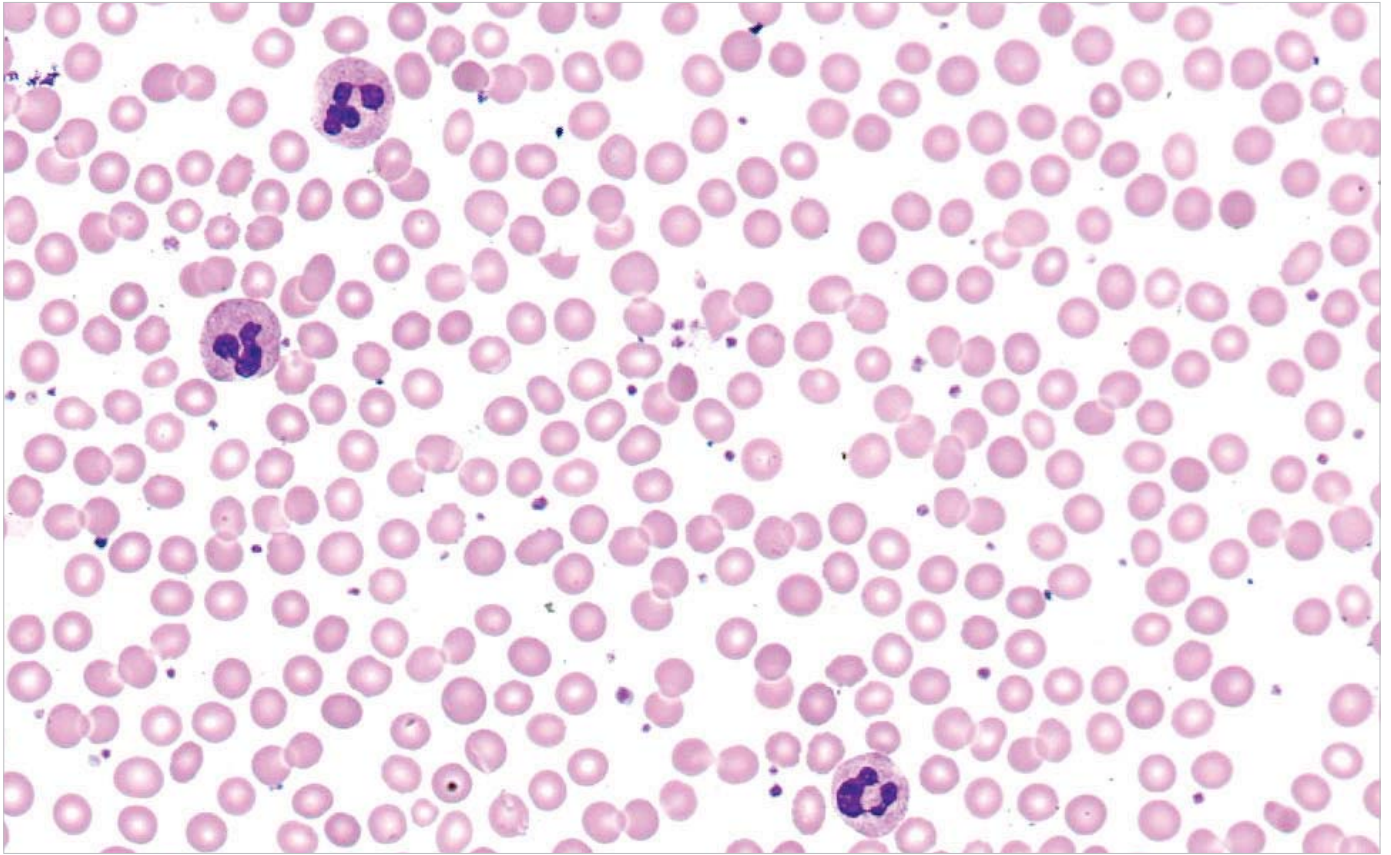


Lymphatic nodes



Spleen

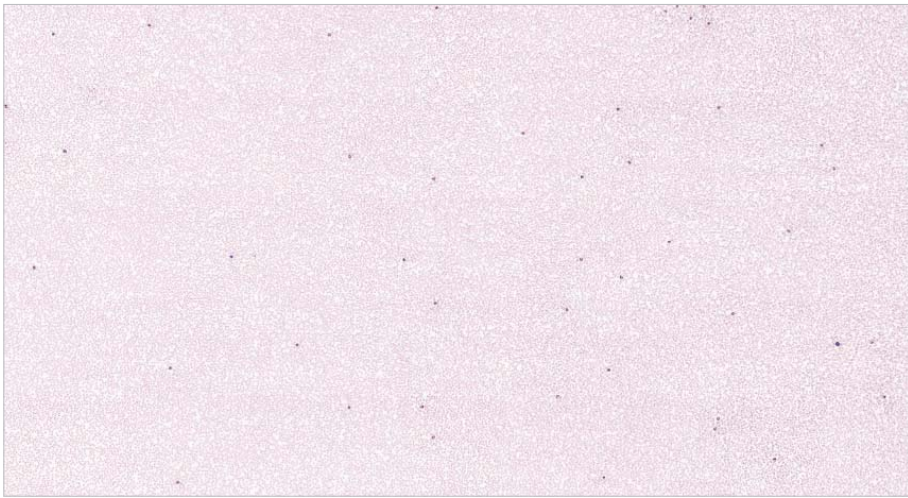
Immersion scanning



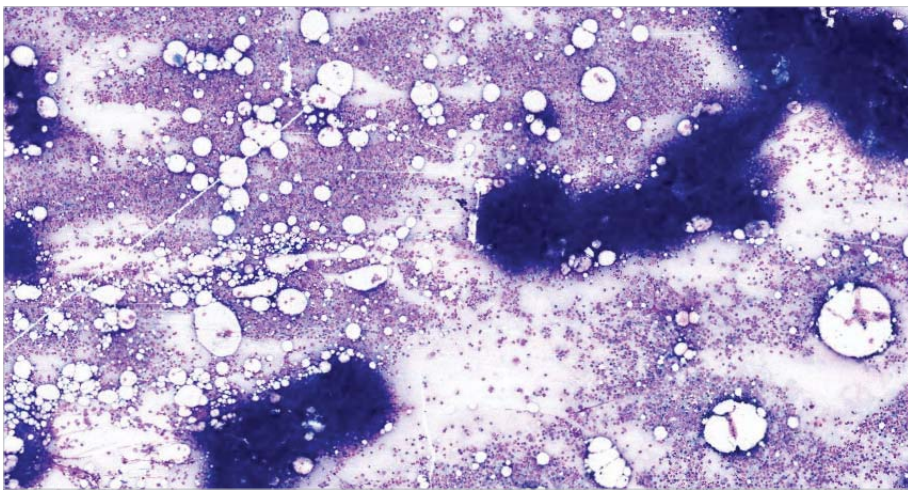
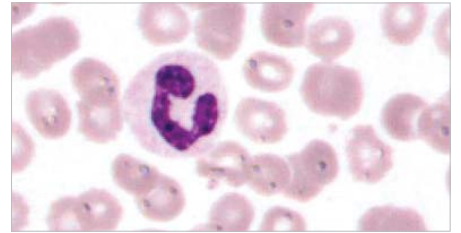
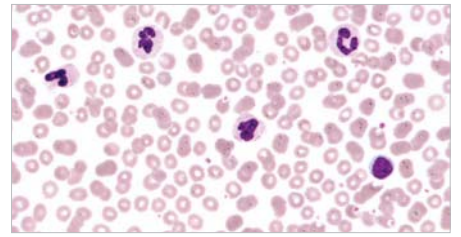
Immersion scanning with high magnification and high definition

Sample scanning with high magnification (60x, 100x), when the high quality of images is required. For example, for blood and bone marrow samples.

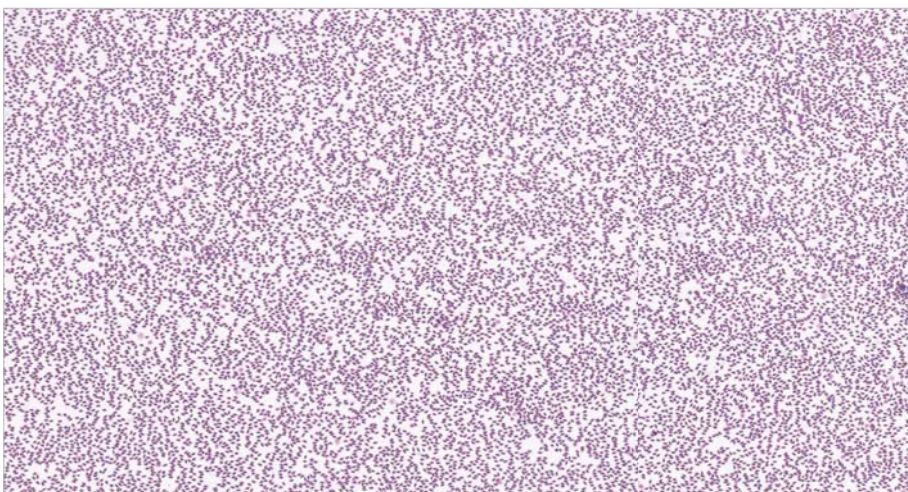
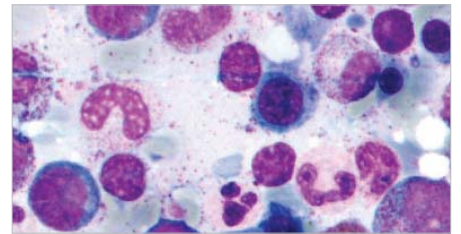
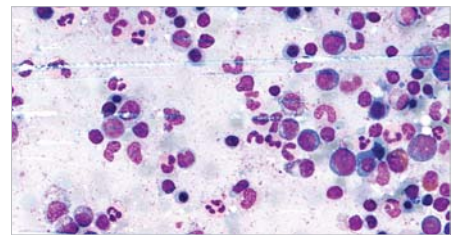
Special high definition objectives are used for immersion scanning. These objectives work with immersion oil.



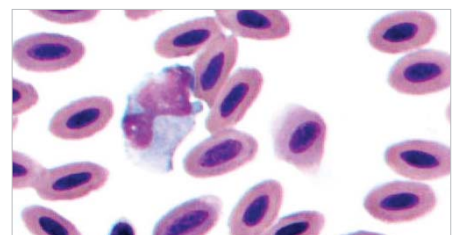
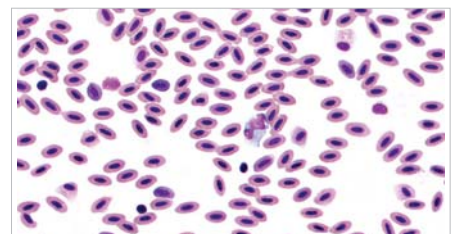
Human blood



Bone Marrow



Hawk blood

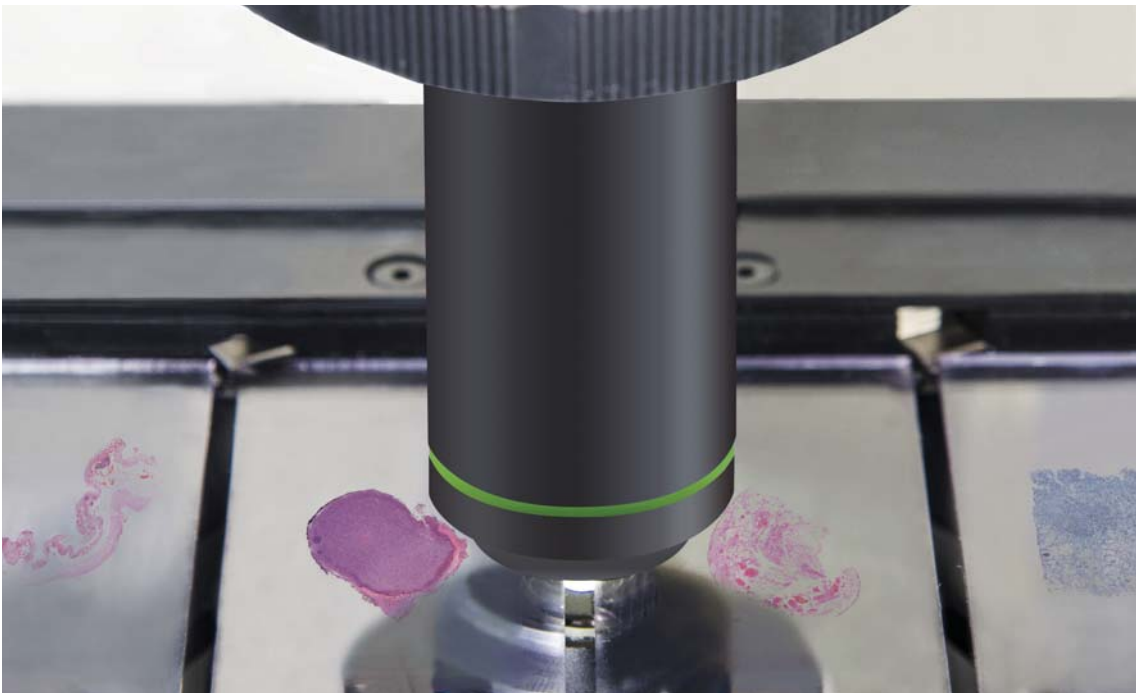


Digital slide scanners

MT5000 (DSS 1) — Successive slide loading by operator



MT5000 (DSS 4) — Multiple slide loading by operator



Specifications

	MT5000 (DSS 1)	MT5000 (DSS 4)
Main characteristics		
Slide capacity	1 slide	up to 4 slides
Imaging mode	Brightfield	
Illuminator	Built-in Koehler illumination, LED	
Microscopic slides	Width: 25–26 mm, length: 75–76 mm, thickness: 0.8–1.4 mm	
Scanning		
Scan time (15x15 mm, 20x)	1.5 min	2 min
Objectives	Plan Apochromat 20x/0.75 Plan Apochromat 40x/0.95 (optional) PLN 50x/0.90 Oil (optional) U Plan Achromat 100x/1.25 Oil (optional)	
Objective turret	Yes	
Resolution	Plan Apochromat 20x — 20x/40x: 0.5/0.25 $\mu\text{m}/\text{pixel}$ Plan Apochromat 40x — 40x/80x: 0.25/0.12 $\mu\text{m}/\text{pixel}$ PLN 50x Oil — 70x: 0.15 $\mu\text{m}/\text{pixel}$ immersion EC Plan-Neofluar 40x Oil — 60x: 0.18 $\mu\text{m}/\text{pixel}$ immersion	
Focus	Automatic Extended Range	
Software		
V-Scan	<ul style="list-style-type: none"> — Scanning slide and creating virtual sample — Visualization and storage of digital samples in the database — A professional set of tools to work with digital samples: create, edit, organize, classify and comment — Calculation of geometric parameters in standard measurement units — Automated and manual calculation of optical and geometric parameters of a selected object. Tools to create marks and comments on the digital sample — Remote access and network capabilities 	
Environment		
Power	110–240 V / 50–60 Hz	

Ōdaï`c`ÁÁ`K



**New York
Microscope
Company**

Microscope Experts since 1979

100 Lauman Lane, Suite A, Hicksville, NY 11801
Tel: (877) 877-7274 | Fax: (516) 801-2046
Email: Info@nyscopes.com
www.microscopeinternational.com



MEIJI TECHNO CO. LTD
322-1, Chikumazawa, Miyoshi machi,
Iruma-gun, Saitama 354-0043, Japan
tel.: 049-259-0111
fax: 049-259-0113
meiji@meijitechno.co.jp

www.meijitechno.co.jp

MEIJI TECHNO AMERICA
5895, Rue Ferrari
San Jose, CA 95138
tel.: (408) 226-3454
fax: (408) 226-0900
info@meijitechno.com

www.meijitechno.com

MEIJI TECHNO UK, LTD.
The Vineyard, Axbridge
Somerset, BS26 2AN, UK
tel.: 01934 733 655
fax: 01934 733 660
enquiries@meijitechno.co.uk

www.meijitechno.co.uk