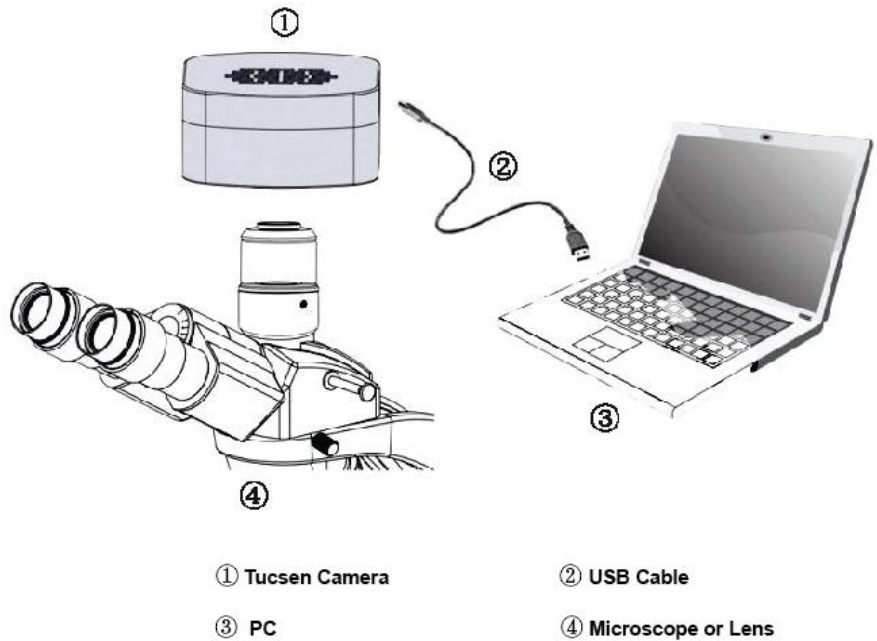


Tucsen Camera Quick Start

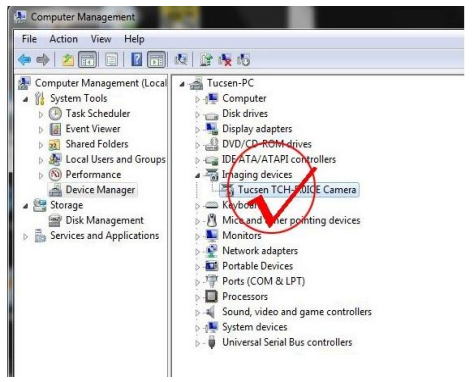
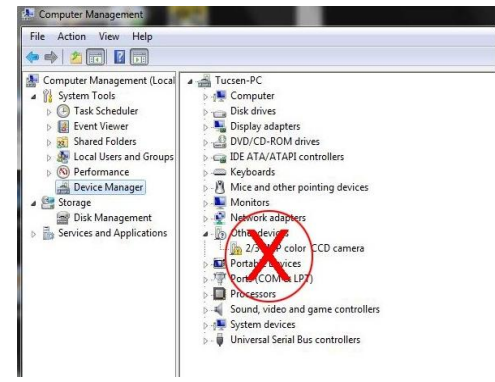
Camera Installation



Driver Installation

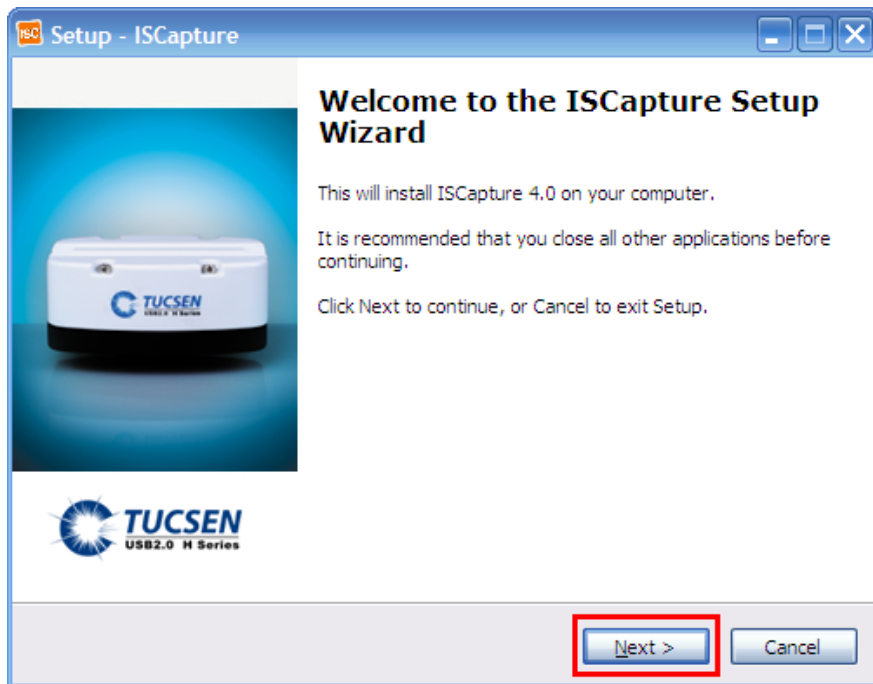
1. Connect the camera to the PC. Insert the CD comes with the camera, copy the driver “Tucsen Camera Driver (H Series) Setup.exe” to the computer. Double click on it to start the installation. Follow the [Next] button to finish the installation.


2. Go to the Device Manager and check whether the driver is installed properly. If there is **NO YELLOW FLAG** with the camera under **Imaging Device in Device Manager**, the driver is installed successfully (see Figure 1).



Software Installation

1. Copy the software ISCapture installer to the PC. Double-click on it to start the installation. Follow the [Next] button to finish the installation.



2. After finish the installation, a software shortcut  will be


created on the desktop.

Note: If previous version ISCapture was installed in your PC, the installer will automatically detect it and ask to remove it first before install the new one.

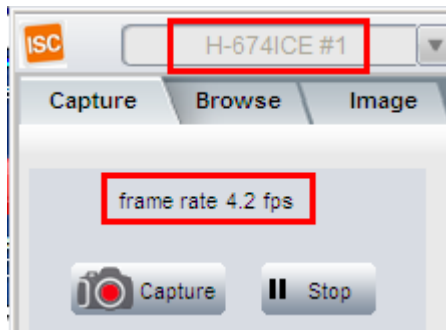
If the previous installed ISCapture is still running, it will ask to close the software and then start the installation.

Start ISCapture

1. Connect the camera to the PC. Be sure the driver is already installed properly.

2. Double-click the ISCapture shortcut  to start the software.

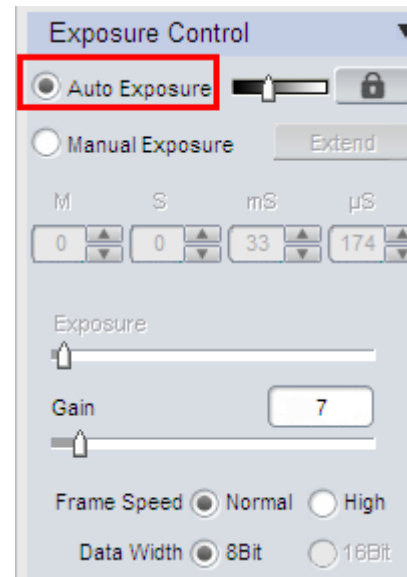
3. Software will automatically detect the device and start the preview.



If get the “No Camera” or “Initialization Failed” error, it could be the camera is not detected by the PC or the driver is not installed properly. Please go to Device Manager to check the camera driver installation status.

ISCapture Parameter Settings

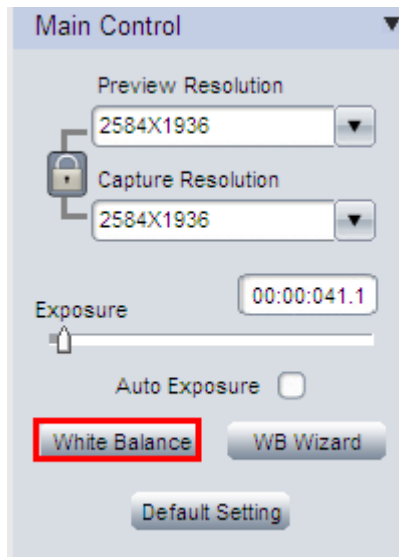
1. Set [Auto Exposure](#). Observe the preview and adjust the microscope (or lens) to make image in focus.



Normally Auto Exposure function can get proper brightness preview. If preview is still dark, manually set [Gain](#) to the middle of the slider.

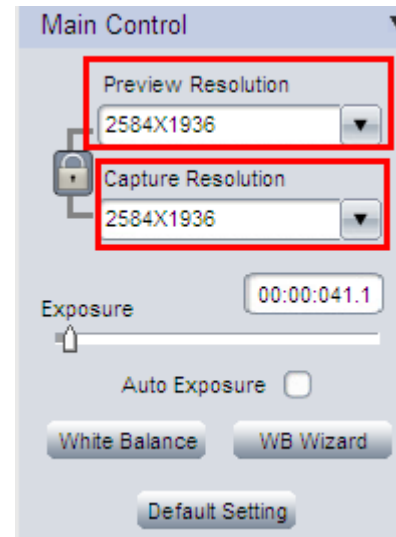
When get preview in focus, set [Gain](#) back to the initial value, change to [Manual Exposure](#) mode and extend the exposure time manually until get proper brightness images.


2. Click [White Balance](#) button to correct image color.



To get better white balance result, please move the sample to the blank area and then hit [White Balance](#) button, then move back the sample. Or also can click [WB Wizard](#) and follow the steps to finish the white balance.

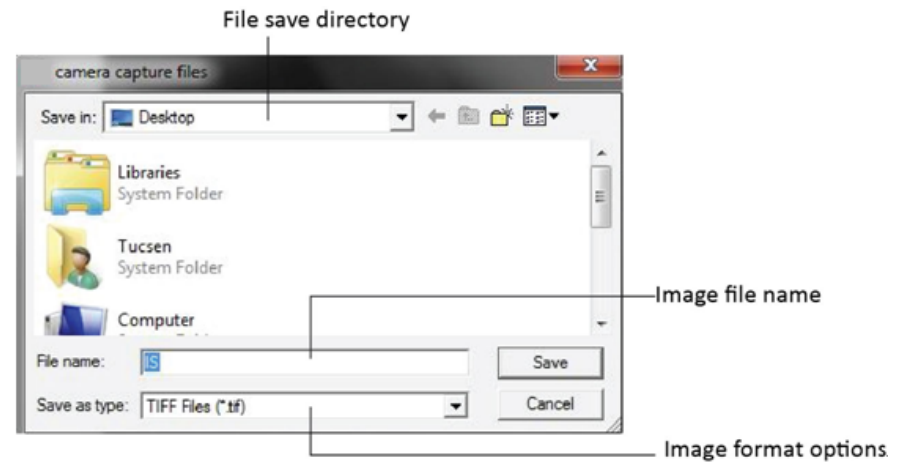
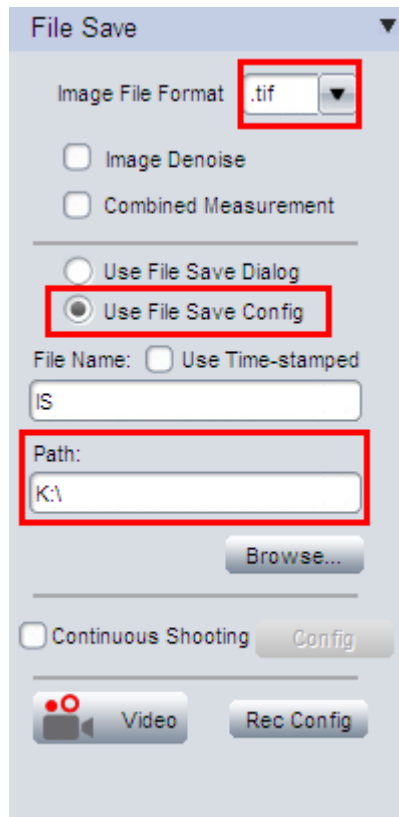
3. Change resolution, get different preview and capture images.




Click the Lock tag  to lock/unlock the preview and capture resolution. Unlocking it allows to set different preview and capture resolution (Usually use for low resolution preview, high resolution for capture).

4. Go to [File Save](#) tab to set image save format, directory and file name.

a. Select [Use File Save Config](#) to pre-set the capture image format, save directory and file name.



Every time click Capture button , the file save dialog will pop up to ask to set file name, save directory and image format.

- b. Select **Use File Save Dialog** to use pop up dialog to set capture image file name, save directory and format.

Öäöä öää ö^K