



# HD2600T

## Excellent imaging performance

### Sony professional CMOS sensor

- 6 megapixel sensor-IMX178    · Sensor Size-1/ 1.8"
- Pixel Size-2.4x2.4 $\mu$ m    · Resolution -3072 x 2048

### ISP color-interpolation algorithm

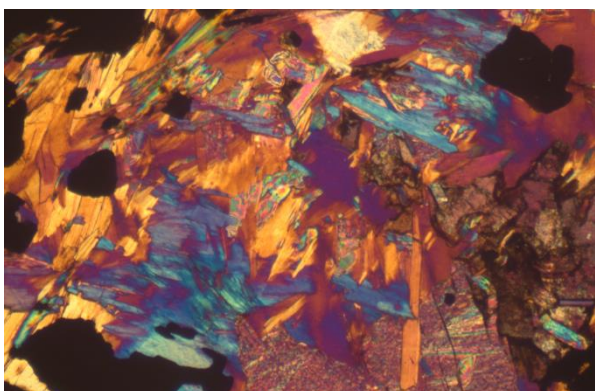
Effectively improve the color deviation of the sensor  
 Perfectly restore the true color of the sample

### USB 3.0 Stable high-speed transmission

Simple and convenient while ensuring a stable rate  
 At full resolution, 40 fps rapid imaging can be achieved

### Supports 4 Cameras Simultaneously in SDK

Automatic matching data bandwidth algorithm Achieve  
 the state of 4 cameras running synchronously in SDK

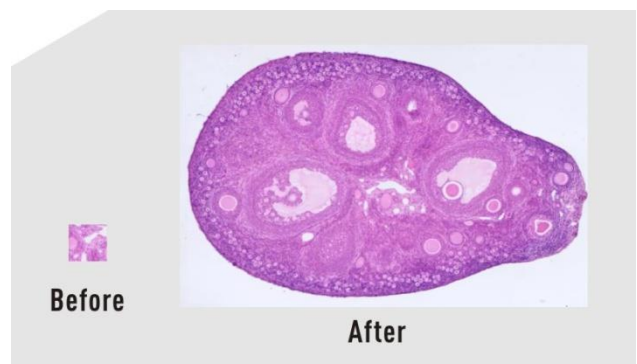


## Revolutionary imaging software

From the user's point of view, redefining the image acquisition- editing - measurement - report output workflow process. The inclusion of Meiji Techno's latest image processing algorithm, effectively improving productivity.

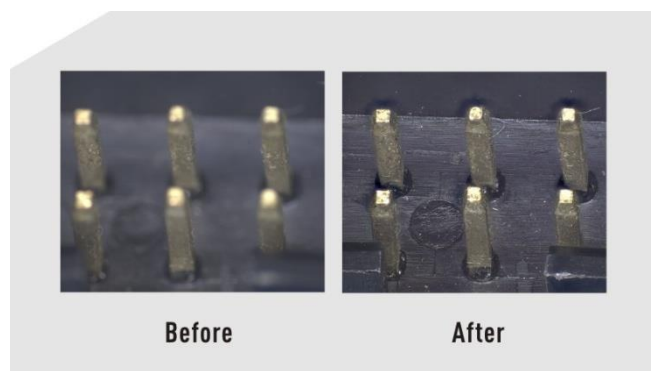
### Real-time image stitching

Moving the stage to get full field view in a few seconds



### Real-time depth-of-field fusion

Turning the focus ring to capture different depth of field points



## HD2600T Specification

Product Model	HD2600T
Sensor Model	IMX178LQJ-C
Sensor Type	CMOS
Sensor Size	1/1.8"
Color/Mono	Color
Pixel Size	2.4 x 2.4(μm)
Resolution	3072(H) x 2048(V)
Frame	41fps(3072x2048) 41fps(1536x1024 2x2bin)
Shutter Mode	Rolling
Exposure Time	0.13ms-15s
Automatic Set	Exposure, Color Scale, White Balance
Manually Set	Exposure, Gain, Noise Reduction, Gamma, Flat Field Correction
Color Temperature	2000-15000K
ADC Depth	12Bit
PC Software	Capture V2.0
Picture Format	JPG / PNG / TIFF
Operating System	Windows is supported and Linux/Mac is under development
PC Configuration	CPU: Intel Core i5 or better(Quad or more Core), RAM: 8G or more, OS: Windows 7/8/10 64bit
Multiple Cameras	Supports 4 Cameras Simultaneously in SDK
Data Interface	USB 3.0
Optical Interface	Standard C Mount
Camera Size	68 x 68 x 46 mm
Camera Weight	330 g

## HD2600T Appearance

- Meticulous CNC arc processing
- Environmental protection spraying
- Stainless steel C ring with no debris

## Capture V2.0 Software Feature Function

- Intelligent 12-bit ISP color reproduction
- Real-time depth of field fusion (Option)
- Real-time image stitching (Option)
- Real-time fluorescence image synthesis and editing
- HDR image synthesis
- Micro-imaging-based intelligent automatic exposure
- Smart measurement workflow
- Implements multiple iterations of workflow execution
- Supports single shot, delayed camera
- Automatic video and delay video generation
- Output format selection
- User parameter group save and load
- Dynamic \ static measurement, layered measurement
- Supports measuring gauges, layers, precision, naming, style
- Implements drawing: points, lines, rectangles, polygons, circles, arcs, angles
- Data export as TXT or Excel
- Report generation and printing



Distributed by:



100 Lauman Lane, Suite A, Hicksville, NY 11801  
 Tel: (877) 877-7274 | Fax: (516) 801-2046  
 Email: [Info@nyscopes.com](mailto:Info@nyscopes.com)  
[www.microscopeinternational.com](http://www.microscopeinternational.com)