



The BioVID 4 K Ultra HD camera from LW Scientific provides stunning resolution and color for client education and live presentations. Mount the camera to any trinocular C-mount, and you will have access to high-quality, 4K pictures and video on your monitor or television screen. Save images and videos to the camera's SD card, or connect the camera to your computer via USB 3.0, Gigabit Ethernet, or even Wi-Fi with the help of a 5G WLAN adaptor. The BioVID 4K also has an HDMI port for connection to larger TVs. With a resolution of 5440 x 3060, the BioVID 4K camera will display 4K quality onto any 4K compatible screen. This camera comes equipped with an extremely sensitive Sony IMX183(C) sensor chip to help it maintain 4K resolution in low-light and high magnification settings.

Unpacking and Setup

The BioVid 4K Ultra HD Camera comes delivered in a box with the following parts. If any parts are missing, please contact your distributor or LW Scientific promptly.

- HDMI cable
- 8G SD card
- Power adapter
- USB Mouse with 1.3m cable
- USB 3.0 cable - 2 meter
- CD with camera software

Please read and complete the warranty form online at LWScientific.com/warranty_form. The warranty form documents your purchase. Failure to fill out the warranty form may void any warranty claims on the unit.

Setting Up Your Camera

Mounting camera to microscope:

Remove all camera components and set them on a secure, clean surface.

Next, take the camera out of the packaging. If your microscope or stereoscope has a trinocular head, simply screw the camera onto the C-Mount. If you have a binocular scope, you will need the optional eye tube adapter (part number MVP-ADAO-ETCM) to allow you to insert the camera into one of the binocular eye tubes....

Insert included SD card straight down into the SD card slot.



For HDMI output:

Once the camera is firmly mounted and secured onto the microscope, plug one end of the included HDMI cable into the top of the camera and the other into your HD TV.

Connect the USB mouse to the USB port on the top of the camera.

Plug the included power cord into the DC12V port on the top of the camera. The LED light on the top of the camera will glow red. Next, press the ON/OFF button once to power on the camera. The LED light will change to blue. Your camera is now ready to use.

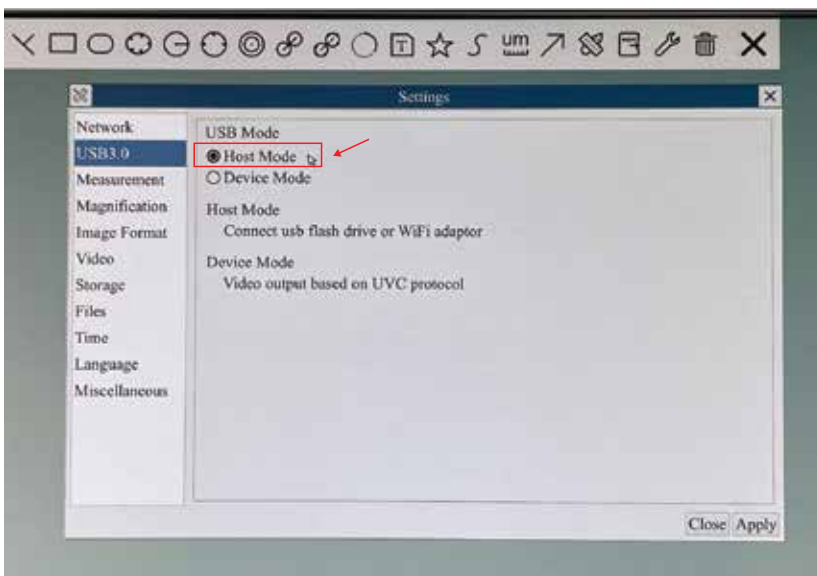
***DO NOT LEAVE POWER JACK PLUGGED IN FOR EXTENDED PERIODS OF TIME.** Unplug jack when camera is not in use.

For WiFi output:

With the HDMI cable connected to the camera and your HD TV, use the USB mouse to choose the **Setting** section in the top menu.



Go to the **USB 3.0** section and change the USB Mode to **Host Mode**.



The software will ask you to restart the camera. Click "Okay" and wait for the screen to come back on. *if using USB mode later, be sure to switch this setting back to **Device Mode**.

Connect the WLAN 5G adaptor into the USB 3.0 port on the top of the camera.

For USB output:

Install included software per instructions in the Software Installation section of this manual.

Plug one end of the included USB cable into the USB 3.0 port on the top of the camera and the other into the USB port of your computer. (A USB 3.0 is optimal).

Plug the included power cord into the DC12V port on the top of the camera.* The LED light on the top of the camera will glow red. Next, press the ON/OFF button once to power on the camera. The LED light will change to blue. Your camera is ready to use.

For Simultaneous HDMI and USB output:

Attach the HDMI cable to your HD TV and the USB cable to your computer.

For Ethernet output:

Install included software per instructions in the Software Installation section of this manual.

Plug one end of a Gigabit Ethernet cable into the ethernet port on the top of the camera and the other into the ethernet port of your computer.

To set up your camera into a router, Follow the instructions on in the **Connecting to a Router** section.

BioVIEW Camera Monitor Instructions:

If you purchased the BioView Monitor for your camera, please follow the below steps to install the unit. If you did not purchase the BioView Monitor, you can skip this section.

Before installing the monitor to your BioVID 4K camera, install camera on your microscope's trinocular C mount threading.

Remove the monitor from its packaging and mount the monitor to the camera's front mounting bracket using the included thumbscrew. Do not overtighten the thumbscrew but ensure you securely tighten it to prevent the monitor from falling off of the camera.

Plug the power supply into the camera and monitor.

Note: The BioView Monitor includes a double-ended power cord. You can plug both the monitor and camera into the two connectors, using only one power adapter for both devices.

If you wish to adjust the viewing angle of the monitor, loosen the thumbscrew on the back of the unit and then adjust the screen to the desired angle. Note that the hinge point has teeth to allow the angle to be locked firmly into position. After selecting the desired angle, retighten the thumbscrew to ensure the monitor does not move. Failure to loosen the thumbscrew while adjusting the viewing angle can break the hinge.



Operation - HDMI Output

- 1 Place a slide on your microscope and bring the specimen into focus.
- 2 Make certain your BioVID 4K Camera is installed according to the HDMI directions above and that both the camera and TV are powered on. Toggle through the "INPUT" settings on your TV to ensure that the correct HDMI port is selected. An image will appear on the TV screen.

NOTE: If the edges of the image are cut off, make certain that your HDMI TV supports 3840x2160 resolution.

- 3 Camera Control Panel: Move the USB mouse to the left side of the screen to reveal the Camera Control Panel. (See the image.)

Click the **Snap** button  to save the displayed image to the SD card.

Click the **Record** Button  to save the displayed video to the SD card.

Exposure: Check the box labeled **Auto Exposure** to let the camera do the work. (You will still be able to adjust the brightness of your image by moving the slider marked **Exposure Target**.) Uncheck the box to make the other sliders active for manual adjustment of exposure.

White Balance Settings:

Global Auto WB: When this setting is chosen, the camera white balances automatically and continuously rejusts as needed.

Manual WB: When this setting is chosen, the R and B sliders are available for adjustment.

ROI WB: When this setting is chosen, a blue rectangle will appear on the screen. (See image below.) Use the USB mouse to drag the rectangle to an area on the image that is white. Turn the wheel on the mouse to adjust the size of the rect angle. The camera will consider the area inside the rectangle as white for white balancing purposes.

Other settings such as Sharpness, Denoise, Saturation, Gamma, and Contrast can be adjusted by moving the sliders.

Tool Bar: Move the USB mouse to the bottom of the TV Screen to reveal the icons below on the Tool Bar.



Digital zoom in function



Digital zoom out function



Horizontally flip image



Vertically flip the image



Freeze and resume



Cancel the comparison



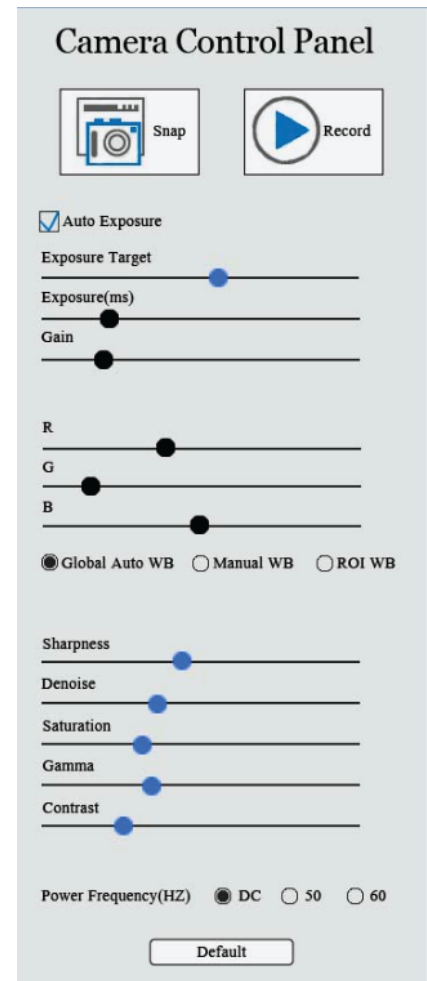
Side-by-Side Comparison: When this button is selected, the right side of the screen will display the live image and the left side of the screen will display the images saved to the SD card. Click on the saved image you want to compare and the screen will display both images for Side-by-Side Comparison.



Click the Browser function to view contents saved to the SD card and then select those for display.



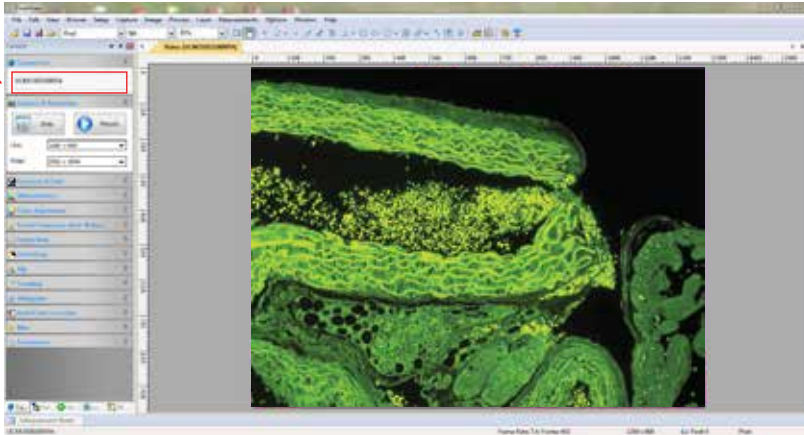
Choose between red and green cross markings.



Operation - USB Output

Install your camera per the instructions in **Setting Up Your Camera** Section:

- 1 Start the ToupView software.
- 2 To begin capturing images, click on device (XCAM4K16MPA) under "Camera List."



- 3 At this point, the screen should be showing a live image from the microscope. If not, look at the microscope head and check if there is a pull knob that directs light up to the trinocular head.

Capture and Resolution: Use the drop-down boxes to select your resolution. Using maximum resolution will slow down the capture rate but will produce larger images, while smaller resolution will allow faster motion while viewing specimens. See image under Step 5.

- 4 **White Balance:** Empty the microscope stage and turn on the light so the camera is viewing an empty illuminated field. Then go to White Balance and click the "White Balance" button.



- 5 Most other settings are set to "auto" or to the best setting. Settings for Frame Speed Level or Flip Horizontal/Vertical can be adjusted if needed.

Capture the image or several images by clicking on the "Snap" button. Capture videos by clicking on the Record button once to begin records and then a second time to end recording.

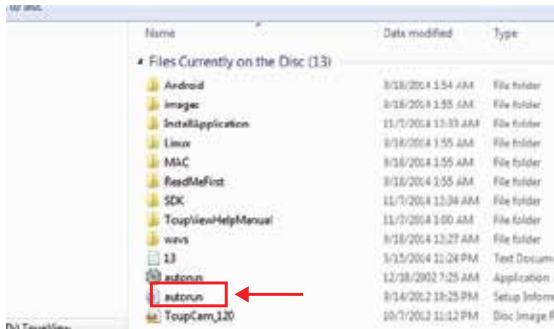


- 6 Tabs for the captured images will appear across the top of the live view window. You can then rename and save these to the appropriate folder on your computer. The images will appear behind the live view screen. Click on the first tab, labeled "Video" and then the camera number, to return to the live view screen.

Optional Live Video Screen: If a full-screen image is desired, select the "View" on the bar across the top of the window, and when the drop down menu appears, select the "Full Screen" option.

Software Installation

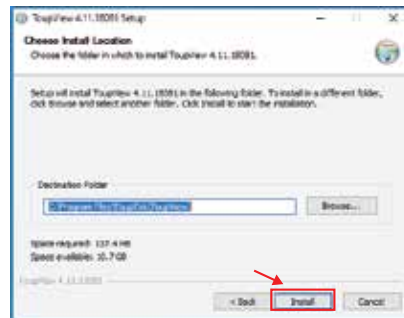
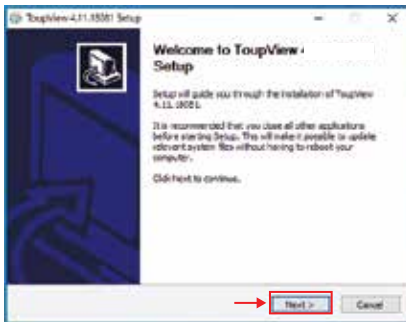
- 1 Insert CD into CD-ROM drive. Go to “My Computer” and view the files on the CD:



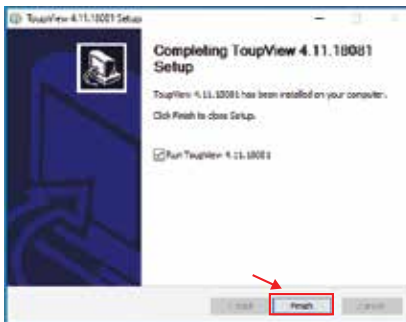
- 2 Click “autorun” and the following screen will appear:



- 3 Next, click “Install Application.” Follow the prompts in the Setup Wizard. Select the location in which you want the software installed. Click “Install.”



- 4 When installation is completed, the following window will appear. Click “Finish.”



- 5 The Software should automatically install a short cut on either your desktop or on the start menu. If it does not, look under “All Programs” in the START Menu, and find the LW Scientific folder. Open the software from there, or right click on the icon, and send a shortcut to the desktop for easy access.
- 6 Not required, but for easy image organization, create a new folder named “BioVID Images” on your desktop next to your ToupView icon. Otherwise, images can be saved into any folder or client file on the computer or network.
- 7 Select “Toupview” icon.
- 8 Connect the camera to the computer using the included USB cable. Your computer should bring up a window which reads, “Device driver software installed successfully.” The software is now loaded, and the camera is ready to use.

Connecting to a Router

Find the Subnet Mask, Gateway, and DNS:

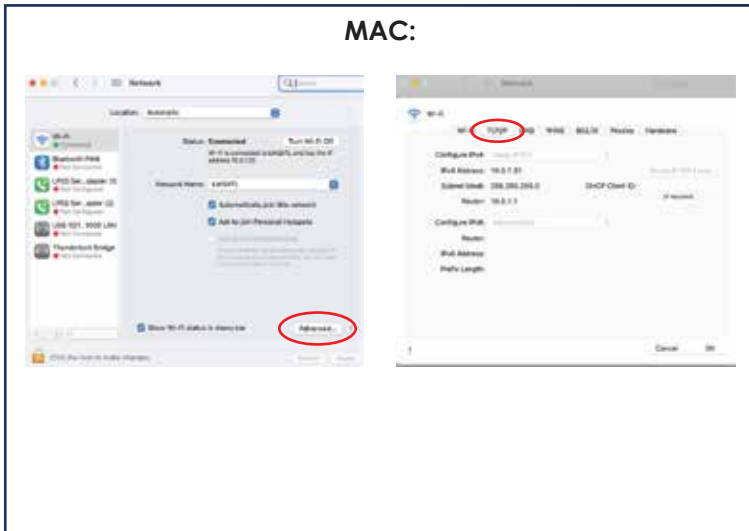
Mac:

- 1 Go to **System Preferences**, select **Network**.
- 2 Select your connection. Go to **Advanced**, select the **TCP/IP** tab.

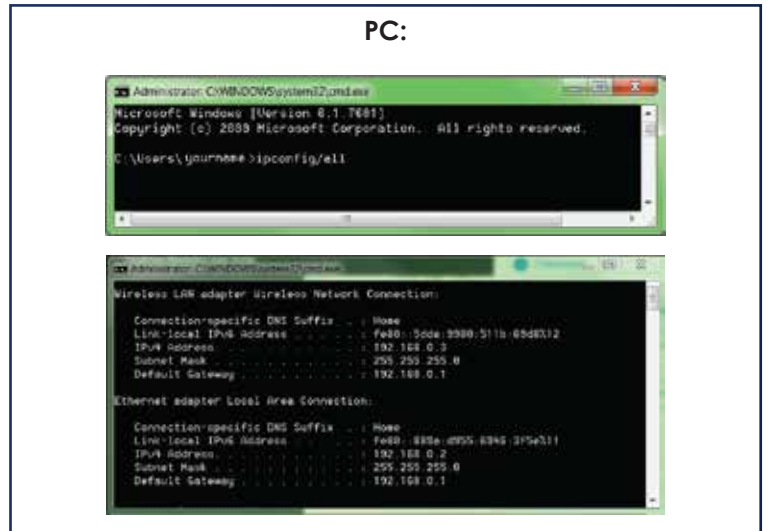
PC:

- 1 In the Windows search field, type **cmd**, to open command prompt. Press **Enter**.
- 2 Type **ipconfig/all** press **Enter**. Look for the Wireless LAN adapter Wireless Network Connection settings.
- 3 Your PC's IPv4 address and your network Subnet Mask and Gateway will be listed.

MAC:



PC:



Connecting the BioVID 4K to your Network:

- 1 Connect the BioVID 4K camera to a TV monitor via HDMI cable. Also connect the USB Mouse, DC 12V power cord, and Cat5e cable (not included) to your BioVID 4K.
- 2 Connect the Cat5e cable to your internet router.
- 3 From the BioVID 4K software on the TV monitor, use the USB mouse to choose from the top menu and select **Settings**.
- 4 Select the **LAN** tab in the Network settings.
- 5 Enter the Subnet Mask, Gateway, and DNS information from your computer:

- IP Address = IPv4 Address
- Subnet Mask = Subnet Mask
- Default Gateway = Mac: Router
PC: Default Gateway



General Precautions and Maintenance

Treat your BioVID as you would any high-quality electronic device. Handle it with care, and do not expose it to moisture or extreme temperatures.

Do not touch the chip inside the camera. If you see spots on the screen, there is likely dust on the chip. This can be cleaned by blowing canned air into the camera.

Please do not attempt to open camera case. There are no user serviceable parts inside.

USB Conflicts: When there are a number of devices installed at the same time, unexpected errors can arise. The cause can be insufficient USB bandwidth or too much combined current being drawn by USB devices. To test these conditions you should uninstall and unplug as many other USB devices as possible.

Image viewing problems: If you see only a black screen, ensure that the trinocular port is opened on the microscope. Point the camera towards a window to confirm that the camera is functioning – light should appear on the screen (though it will not focus when not installed on a microscope).

Computer does not recognize device: Make sure you have plugged into a USB 2.0 port. Always try to use the same port each time; otherwise the computer will see the camera as a new device when plugged into a new port. If this happens, just follow the wizard again and the camera will work on the new port as well.

Slow frame rate or frozen screen: Select smaller resolution settings. Depending on the age of the computer, the video driver may not support the maximum resolution and speed performance capable by the BioVID camera.

Specifications

Resolution:	4K-16 MegaPixels (5440 x 3060)
Image Sensor:	Sony IMX183 (20MP 5472 x 3648) CMOS color 1/1.06" (13.06x7.27mm)
Video Output:	HDMI: <ul style="list-style-type: none">- User Interface: USB Mouse (Included)- Image/Video Capture: SD Card- Video: 30 Frames Per Second @ 3840x2160 (HDMI)- On Screen-camera Control Panel And Toolbar USB 3.0: <ul style="list-style-type: none">- Includes Software For Capturing, Rotating, Measuring, Etc.- Image/Video Capture Into PC and Mac- Video: 30 Frames Per Second @ 3840x2160 (USB 3.0)- White Balance And Standard Color Controls
Power:	Cul / CE Approved Power Adapter
AC Input:	100-240Vac 50/60Hz, 0.31A (Auto-switching Power Adapter)
DC Output:	12v, 1.0 Amp
Operating Condition:	Temperature: -10°C ~ 50°C (14°F To 122°F) Humidity: 30-80%RH
Output:	HDMI Connector SD Card Slot USB 3.0 Connector Gigabit Ethernet Connector WLAN 5G WiFi Adaptor
Weight and Dimensions:	Height: 3.6" (92mm) Length: 2.8" (70mm) Width: 3.1" (78mm) Weight: 1.03lbs. (0.47kg)

MKT-7.5.3-L-293 | Rev 2

