

## Quick Start Guide

Press power switch to switch on microscope. Wait 20 seconds until blue light flashes.

### iPhone and iPad:

1. Download and install the ioLight app from the App Store
2. Connect iPhone / iPad to ioLightxxxxxx WiFi network
3. Start the ioLight app

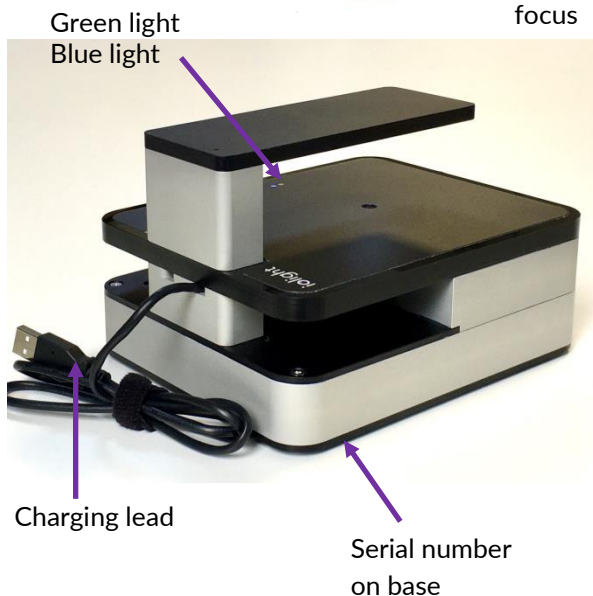
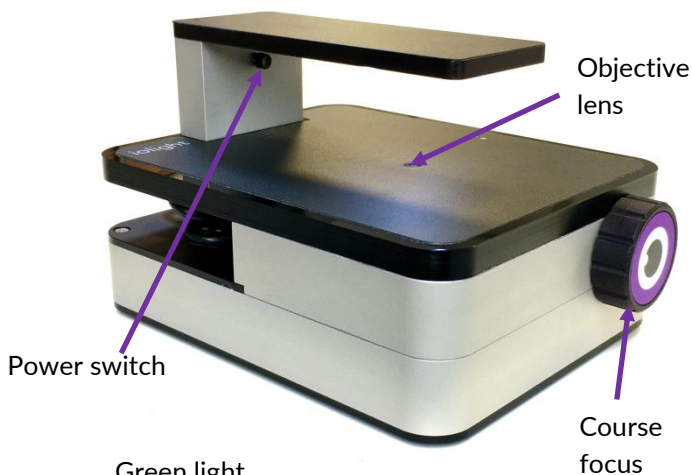
### Android:

1. Download and install the ioLight app from the Play Store
2. Start ioLight app & follow the on-screen instructions to connect to the microscope's WiFi network
3. Your device may tell you that there is no internet available on the iolightxxxxxx network, if it does, choose 'Stay connected to this network'
4. Wait a few seconds for live image from the microscope

### Web Browser:

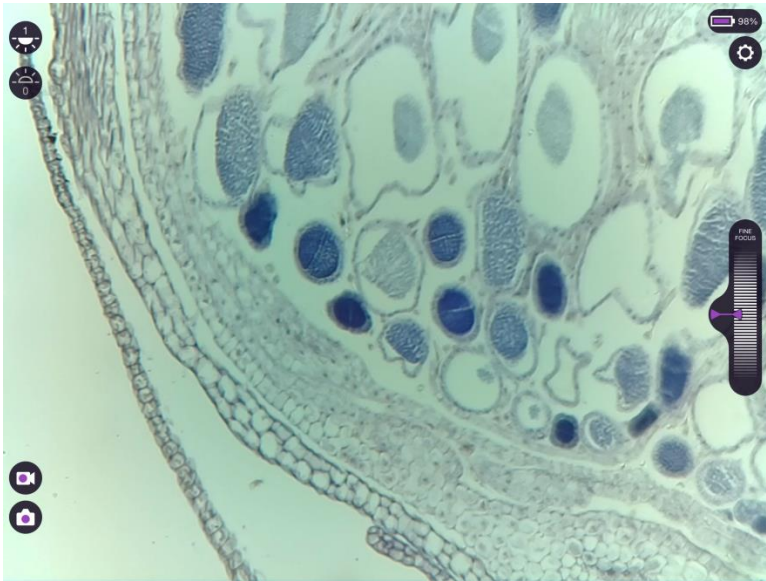
1. Connect your device's WiFi to the iolightxxxxxx WiFi network
2. Open a web browser and type the address 192.168.1.1 into the URL bar

- Switch on top and / or bottom illuminators using the onscreen controls
- Place sample on stage above the objective lens
- Focus the image using the knob
- Adjust fine focus using 'thumb wheel' on screen
- Save a high quality image by pressing the camera icon on screen – the images are saved to your photos app or in your web browser's downloads directory
- Switch microscope off - press and release the power button on microscope. NOTE: it takes 10 sec for the microscope to switch off and the blue light to go out



Blue connection light	Continuously lit	Microscope is starting up or shutting down. Or microscope is streaming live images to a device
	Flashing	Microscope is on and ready to stream live images to a device
	Flashing long-short-long	Microscope battery is <20%
	Flashing fast	Microscope is in recovery mode (see trouble shooting)
Green Charging light	On	USB charger is connected and battery is charging
	Off	Battery has finished charging or no USB charger is connected
Power Switch	Switch on	A short press switches the microscope on. <i>Note: after pressing the power switch it takes approx. 20sec for the blue light to start flashing which signifies that the microscope is now on and read to use.</i>
	Switch off	A short press switches the microscope off. <i>Note: switch off takes approx. 10secs then the blue light goes out</i>  Press power switch and hold it for 5 seconds to reset the microscope (blue light goes out). Only do this if the microscope is not responding.

## Apps (Android and iOS)



- Illumination from above sample
  - 0 - Off
  - 1 - Brightfield
  - 2 - Low NA Brightfield
  - 3 - Darkfield
  - 4 - All on



- Illumination from below sample



- Save image



- Record video



- Settings menu (scale grid & power off)

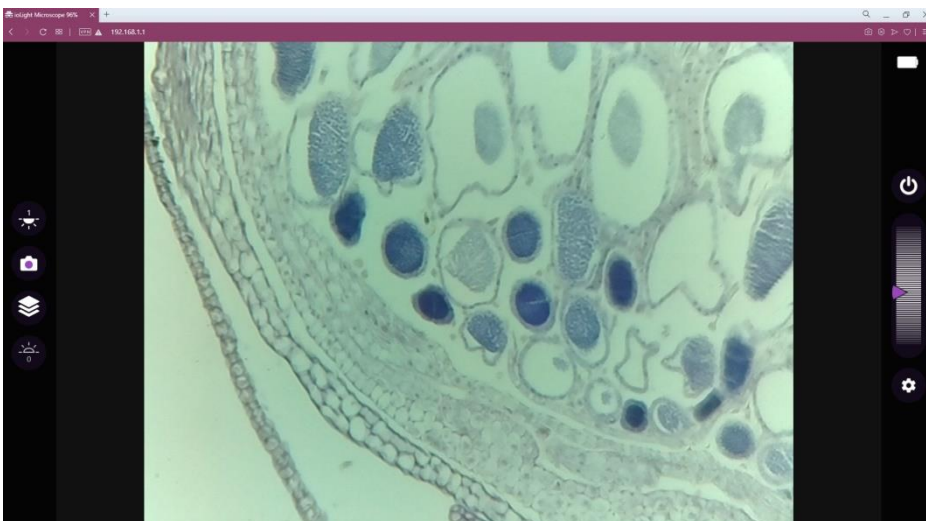
Fine focus. Tap the white triangle on the left hand side of the fine focus thumb-wheel to centre focus



- Microscope battery charge level (*not on iOS lower than 12.4*)

Pinch on image - zoom (*iOS 12.5 and above*)

## Web Browser



### Web browser only:



- Microscope power off



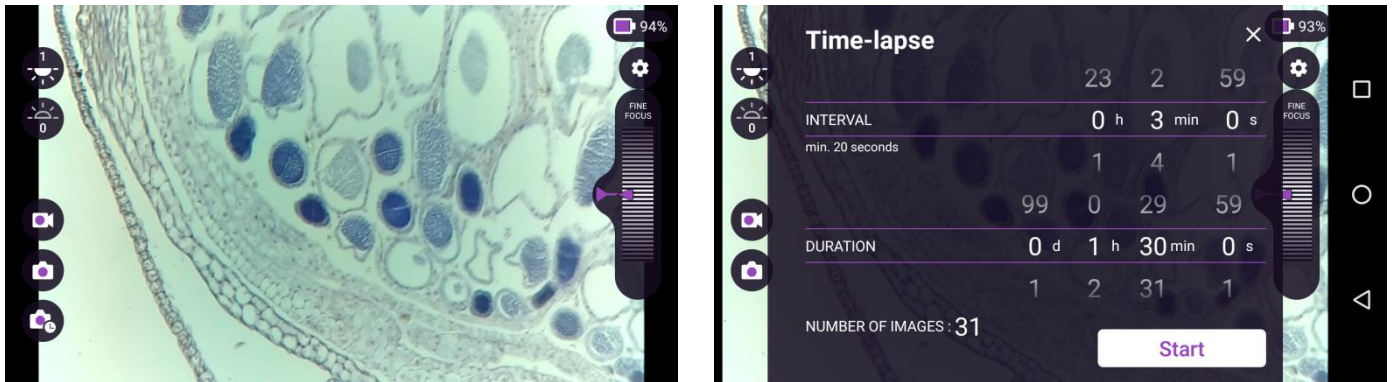
- Save 12 images for Z-Stack

Pinch, or mouse thumb wheel to zoom

For full user guide go to <https://iolight.co.uk/user-guide/>

## Android – additional features

### *Time-lapse imaging*

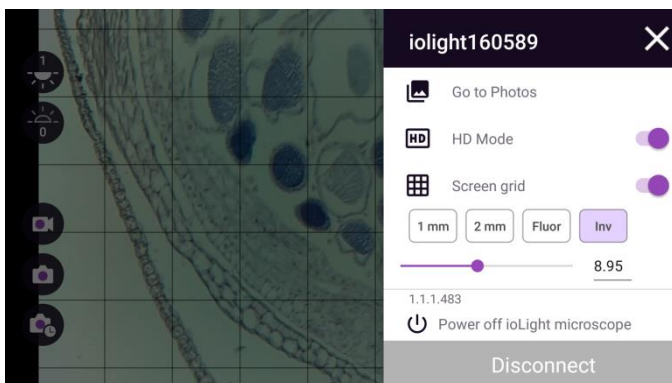


Tap the icon in the bottom left hand corner of the screen to set-up and run time-lapse imaging

Time-lapse imaging can run for a very long time so it is recommended that you:

- Connect your microscope and Android device to their chargers
- Ensure that there is sufficient storage space on your Android device for the images (approx. 1Mb per image)
- Leave the ioLight app visible for the duration of time-lapse

### *Scale Grid*



Tap the settings menu icon (gear icon) to reveal the settings menu. Switch the Screen Grid on and the settings for the grid appear.

There are 4 pre-set settings – 1mm, 2mm, Fluorescence and Inverted which set the grid for the corresponding ioLight microscope. 1 square for the grid represents approx. 0.1mm on the object. You can set a custom grid size either by dragging the slider, or tapping on the number. The number is the number of grid squares across the width of the image.