

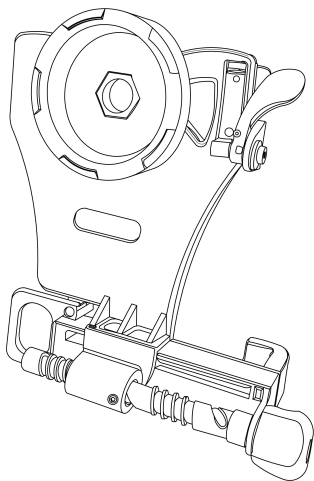
CARSON®

IB-700

Smartphone Binocular Adapter

FITS 40mm - 44mm EYEPIECES

Instructions for use



*Visit www.carson.com/hookupz700
to view our IB-700 tutorial video.*

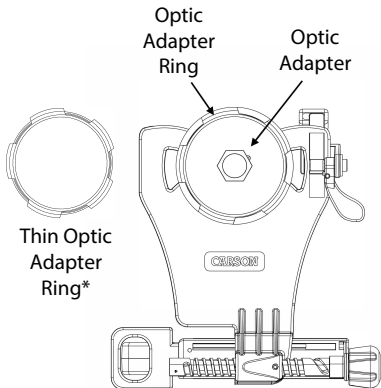
HookUpz™

Table of Contents

Optic Side Diagram.....	2
Phone Side Diagram.....	3
Inserting Phone.....	4-5
Align & Lock.....	6-7
Attaching to Optic.....	8-9
Frequently Asked Questions.....	10-13
Tips and Tricks.....	14
Storage/Cleaning Information....	15
Customer Service.....	15

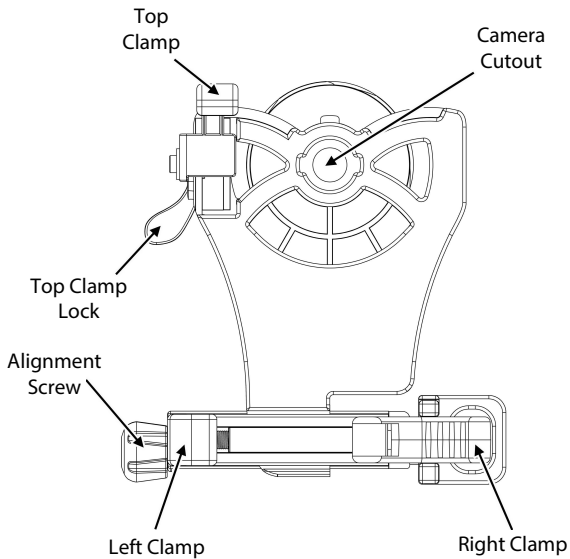
Carson Optical
2070 5th Avenue
Ronkonkoma, NY 11779

www.carson.com info@carson.com
Tel: 631-963-5000 Fax: 631-427-6749



Optic Side

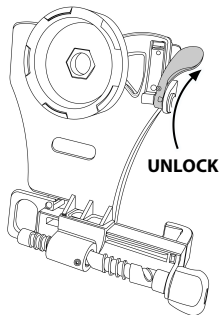
* For larger eyepieces



Phone Side

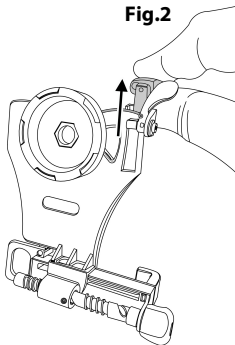
Inserting Phone

Fig.1



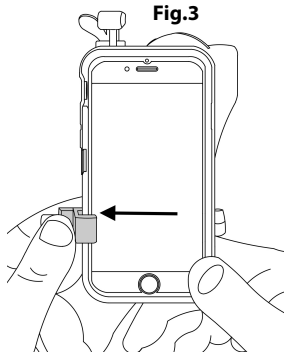
Rotate to unlock top clamp.

Fig.2



Slide top clamp into uppermost position.

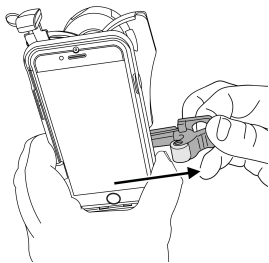
Fig.3



Insert phone into left clamp.

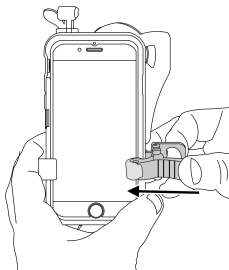
Inserting Phone (cont.)

Fig.4



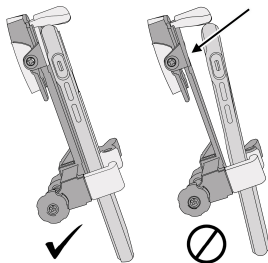
Squeeze and pull right clamp past edge of phone.

Fig.5



Release right clamp to secure phone.

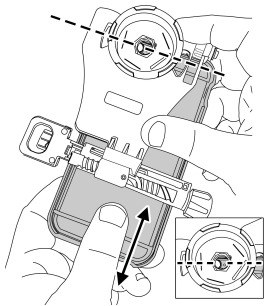
Fig.6



Ensure phone is flat as possible to adapter.

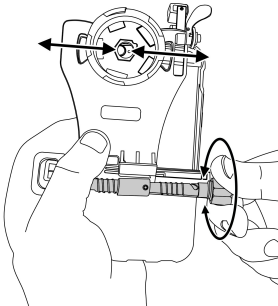
Align & Lock

Fig.7



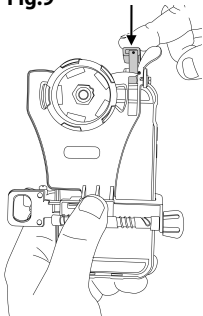
Slide phone vertically until camera is roughly aligned with camera cutout.

Fig.8



Turn alignment screw until camera is centered in camera cutout.

Fig.9



Slide top clamp down against phone edge.

MULTIPLE-LENS CAMERA PHONE:

If there is more than one rear-facing camera, use the primary one. Typically, the primary is a 1x wide-angle color camera, and the other camera(s) are secondary.

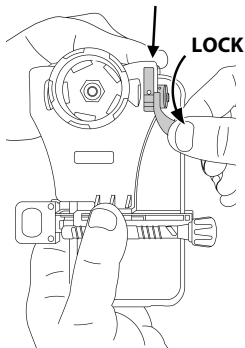
For Apple dual camera phones, the primary camera is the one closest to the corner. Use photo or video mode only.

For Android, the primary camera can be determined by which does not show an image in your app while blocking the individual camera.

For the latest instructions on multiple camera phones, please visit www.carson.com/hookupz700.

Align & Lock (cont.)

Fig.10



While holding top clamp tight to phone, rotate to lock.

Fig.11

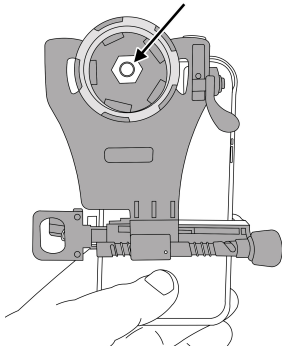
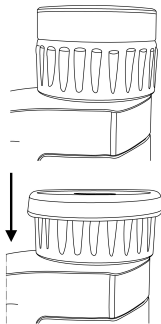


Figure 11 shows a properly aligned camera. If needed, use alignment screw and top clamp to make further adjustments.

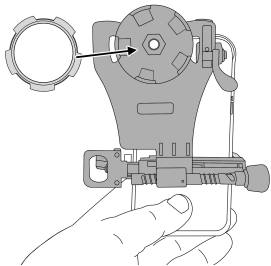
Fig.12



Before attaching binocular, make sure your binocular is focused. If your binocular has flexible eyecups, remove eyecups (if possible) or fold down the eyecups before attaching adapter.

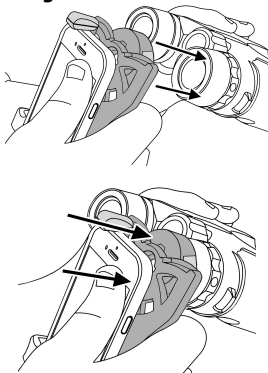
Attaching to Optic

Fig.13



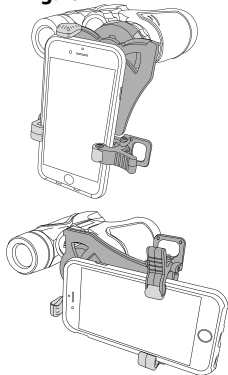
Select the optic adapter ring that best fits your binocular eyepiece and insert it into the optic adapter. In rare instances the adapter will work best without any adapter ring.

Fig.14



Align optic adapter over eyepiece and press down firmly. Be careful not to move your camera out of alignment.

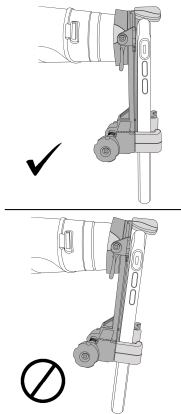
Fig.15



Phone can be positioned in either portrait or landscape mode.

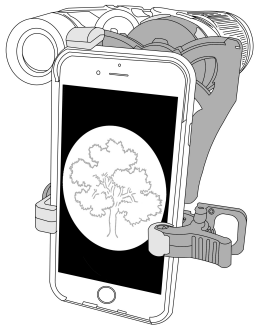
Attaching to Optic (cont.)

Fig.16



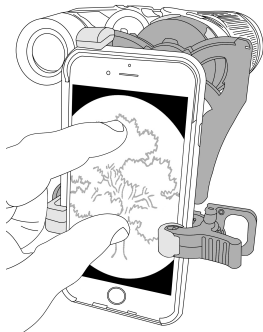
Ensure that optic adapter is flush to the eyepiece of your binocular.

Fig.17



Turn on camera. If image is not centered, repeat alignment steps.

Fig.18



To maximize your image, pinch to enlarge image. For best results, use in video mode.

TO REMOVE PHONE FROM ADAPTER:

To save your alignment, make no further adjustments to the top clamp and alignment knob. Simply remove phone using right clamp only as shown in Fig. 4.

USING ADAPTER AGAIN:

The alignment of your phone to the adapter should be saved from the initial setup, so many steps can be skipped (FIG 1-2, 7-10) and only a quick fine adjustment of the alignment may be needed.

Frequently Asked Questions:

Q1: The top clamp touches the round corner of my phone not the top flat edge of my phone. What do I do?

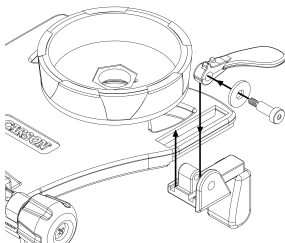
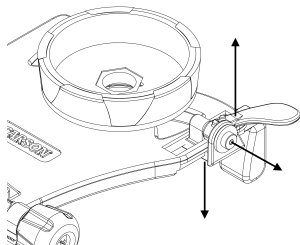
A1: This is normal for some models of phones. Just push as flush to rounded edge as possible and lock top clamp as normal.

Q2: I am getting reflections and/or glare in my image, what do I do?

A2: If there are bright spots in the image itself, this may occur with indoor lighting, please avoid overhead lighting or change the angle over the overhead lighting relative to phone. Also, please use without flash to avoid reflections and/or glare in photos. If there is glare on your phone screen which makes image hard to view, then increase the brightness setting on your phone, and/or try to view from a position with less overhead lighting.

Q3: I can't align my phone vertically with the top clamp, it won't fit. What do I do?

A3: If you go through the alignment process, and there is no way to achieve vertical alignment because it's restricted by the top clamp, try removing your phone case. Alternatively, you can remove top clamp assembly using screw as shown below in left figure. For this configuration, you will not be able to save your vertical alignment between uses, and will have to adjust for the vertical positioning of your phone for each time the phone is placed within adapter. Save these four parts for use with other phones, and you can reassemble the top clamp as shown below in right figure.



Q4: Does this work on a tripod?

A4: No, the adapter itself does not have a tripod mount. However, for best stabilized images and videos, we suggest the binocular used is mounted to a tripod.

Q5: My phone doesn't seem to work with adapter, how do I know which ones will work?

A5: Please see the smartphone sizing guide below.

SMARTPHONE SIZING GUIDE



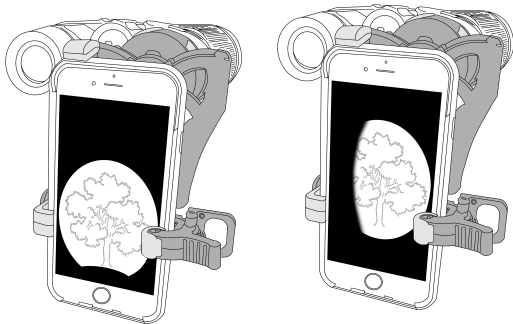
If your phone (in it's case) fits in "portrait" orientation between the 2 arrows, it will fit the smartphone binocular adapter.

Q6: My phone rotates on the eyepiece when used in landscape (horizontal) mode?

A6: If the eyepiece can rotate on your binocular, then you can try the following:

- A.** If your eyepiece can rotate outward, then you must place adapter in orientation to counter the rotation.
- B.** If the eyepiece has any method to secure from rotation such as a set screw, use it to lock down the eyepiece.
- C.** If above solutions are not possible or do not work, for your application, it may not be possible to use in this mode. Please use only in portrait (vertical mode).

Q7: My image is not centered or is not a complete round image, what is wrong?



A7: Adjust phone alignment in vertical direction using top clamp (FIG 10), and in horizontal direction by using alignment screw (FIG 8). Check that phone is flat on adapter (FIG 6), and adapter is flush with optic (FIG 16).

Q8: My other phone camera or flash is covered by adapter, why is that?

A8: First, we recommend using the device with only the primary rear camera. If problems persist, please contact customer support. Second, the flash can be covered, and is not needed for use with optic. We recommend flash setting is turned off at all times when using adapter.

Tips & Tricks:

PHOTOGRAPHY

- Tap object of interest on your phone screen to autofocus.
- For videos, tap and hold object of interest on phone screen for a second to lock focus. Tap again to release the focus lock.
- In low light conditions, turn your phone screen brightness to its lowest level. The rubber parts glow in the dark making it easier to use the adapter.
- For long sessions, try using battery cases or phone chargers to prevent your battery from draining.

APPS

- Share photos and videos through various apps (e.g. FaceTime, Messages, Facebook, Instagram, etc.)
- Apps that allow you to set exposure and focus manually can expand the potential of the adapter. This is especially helpful for telescopes to set longer exposure times to get the best images of sky objects.

STABILIZATION

- Mount your binocular to a tripod or place on a stable surface to prevent external vibrations from shaking image.
- To prevent shaking while capturing photos, attach headphones to smartphone and use the volume buttons to activate shutter.
- Many phones have image stabilization features. Check your phone and turn on this feature if available. If not, there are camera apps with stabilization features.

Storage/Cleaning Information:

- To avoid damage, always store adapter in protective case when not in use.
- For longest life of springs/plastic, store in dry area at room temperature.
- Adapter should be cleaned with soft, damp cloth only. Do not use any chemicals or abrasives.

Customer Service:

We will be happy to help you with any problems you may experience with your HookUpz™ Smartphone Binocular Adapter. Email us at info@carson.com or call toll-free at 1-800-967-8427.

CARSON®

Öã dã~ çãÁ^ K



**New York
Microscope
Company**

Microscope Experts since 1979

100 Lauman Lane, Suite A, Hicksville, NY 11801

Tel: (877) 877-7274 | Fax: (516) 801-2046

Email: Info@nyscopes.com

www.microscopeinternational.com