

# ACCU-Slide MS

by ACCU-SCOPE®

*Digital Slide Scanning Simplified*

## Manual Slide Scanning System!

Introducing ACCU-SlideMS by ACCU-SCOPE — featuring a high-speed USB 3.0 camera with state-of-the-art Sony sensor technology combined with intuitive imaging software.

The solution to all your digital slide-scanning & storage needs!

### Benefits:

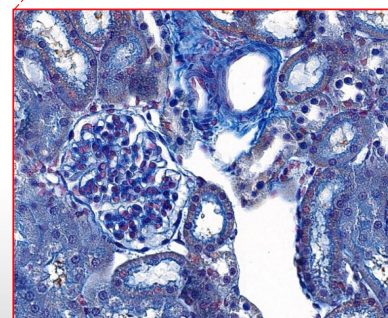
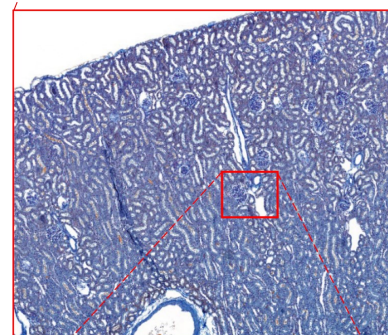
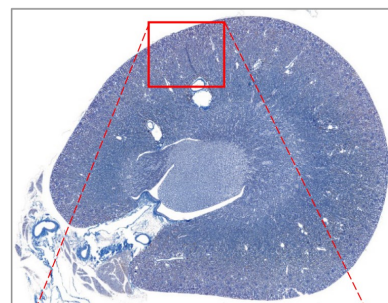
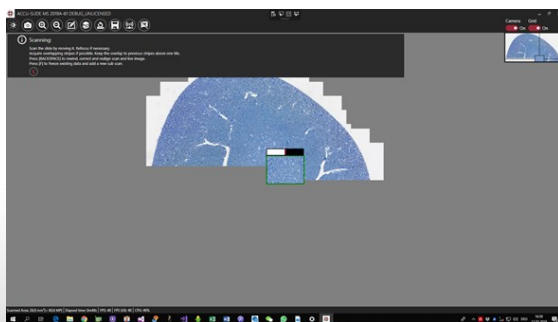
- Use your existing microscope!
- Scan an entire slide or just the region of interest!
- Affordable — just a fraction of the cost of a slide scanner!
- High resolution images for documentation, analysis and more!

### Features:

- Automatic shading correction
- Automatic stitching as the stage moves
- Color balancing
- Focus indicator
- Thumbnail overview of progress
- Scan noncontiguous specimens with "Freeze Feature"

ACCU-SlideMS shows the scanning process with a thumbnail image along with a focus bar.

Scan an entire slide or just the region of interest without losing clarity!





CAT#: AU-SLIDE-MS

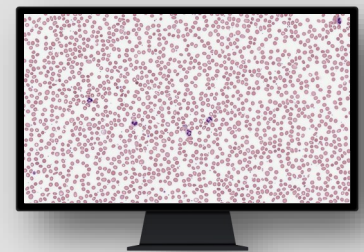


### CAMERA SPECIFICATIONS

Model	2.3 MP color camera
Sensor / Model	CMOS · Sony IMX249
Sensor Size	11.3mm x 7.1mm; 0.65x camera adapter (recommended)
Image Transmission	High-speed
Pixel Size	5.86µm x 5.86 µm
Resolution	1920 (H) X 1200 (V) pixels
Frame Rate	41FPS
Shutter Mode	Global
Exposure Control	With ACCU-Slidems Software
Pixel Bit Depth	10 or 12
Operating Temperature	0-50°C
Camera Size & Weight	29.3mm x 29mm x29mm / 80g
Data Interface	USB 3.0, compatible with USB 2.0
Power Requirements & Consumption	Via USB 3.0 interface; 2.7 watts

*Design, features and specifications are subject to change without notice.*

- Affordable
- Convenient & Flexible
- Superior Image Quality
- Highly Productive
- Integrates With Your Existing Microscope



Simple USB 3.0  
Connectivity



### COMPUTER SYSTEM REQUIREMENTS

HARDWARE	MINIMUM CONFIGURATION	RECOMMENDED CONFIGURATION
CPU	Intel Core i3 Dual Core 3000/4000/6000 Series	Intel Core i5 or i7 Quad Core, 4000/6000/7000 Series
RAM	4 GB	16 GB
DISK / HARD DRIVE	500 GB Standard Hard Drive	512 GB Solid State Hard Drive
CHIP SET	Intel 7 Series B75/Q77/H77/Z77 . . .	Intel 100 Series H170/Z170 . . . Or Intel 200 Series
DISPLAY	Resolution 1600 x 900 pixels	23" Display — 1920 x 1080 pixels (good) 27" Display — 2560 x 1440 pixels (better) 32" Display — 3850 x 2160 pixels (best)
OPERATING SYSTEM	Win 7 Home 64-bit SP1	Windows 10 Professional 64-bit



100 Lauman Lane, Suite A, Hicksville, NY 11801  
Tel: (877) 877-7274 | Fax: (516) 801-2046  
Email: [Info@nyscopes.com](mailto:Info@nyscopes.com)  
[www.microscopeinternational.com](http://www.microscopeinternational.com)

