



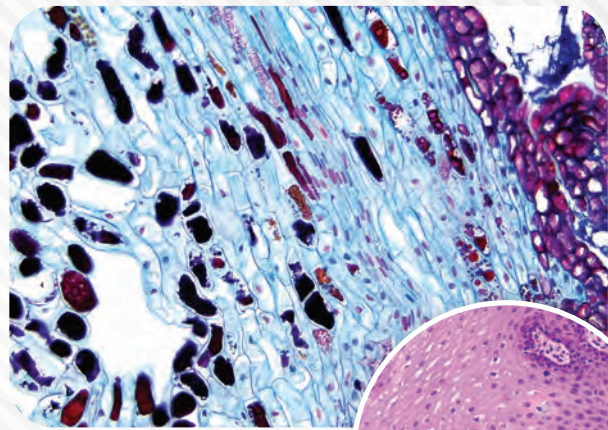
ACCU-SCOPE®

MICROSCOPY & IMAGING SOLUTIONS

EXC-120
Biological Microscope

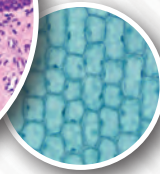
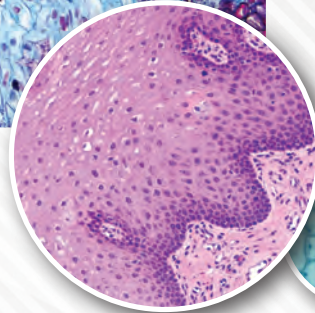


Empowering Discovery. Advancing Results.



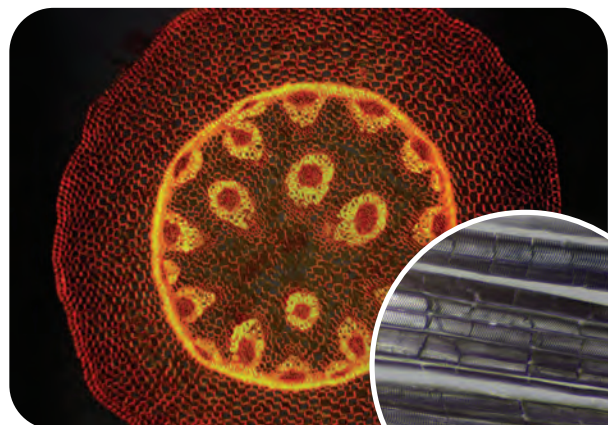
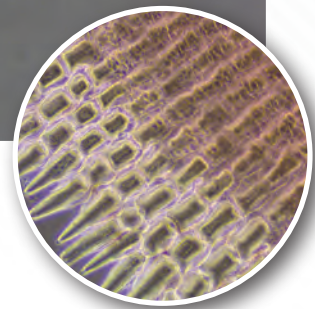
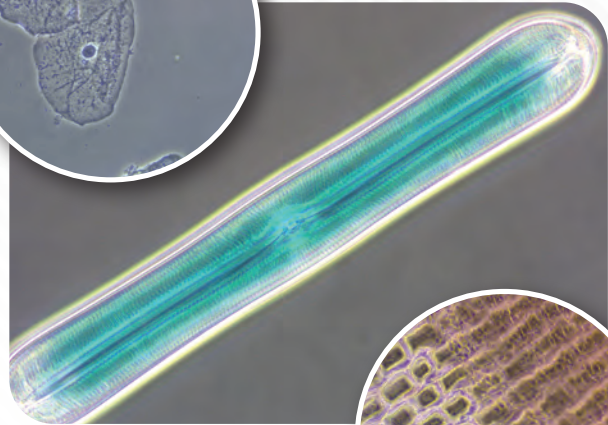
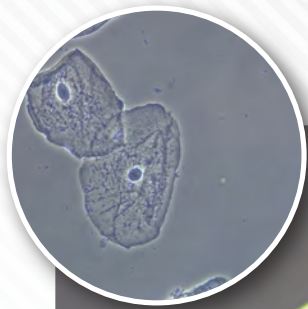
Brightfield Observation

Brightfield observation is at the heart of traditional microscopy. The EXC-120's Abbe condenser delivers bright illumination to the specimen for maximum contrast and resolution. The LED illumination of the EXC-120 is already color adjusted, so no filter is needed for color balance.



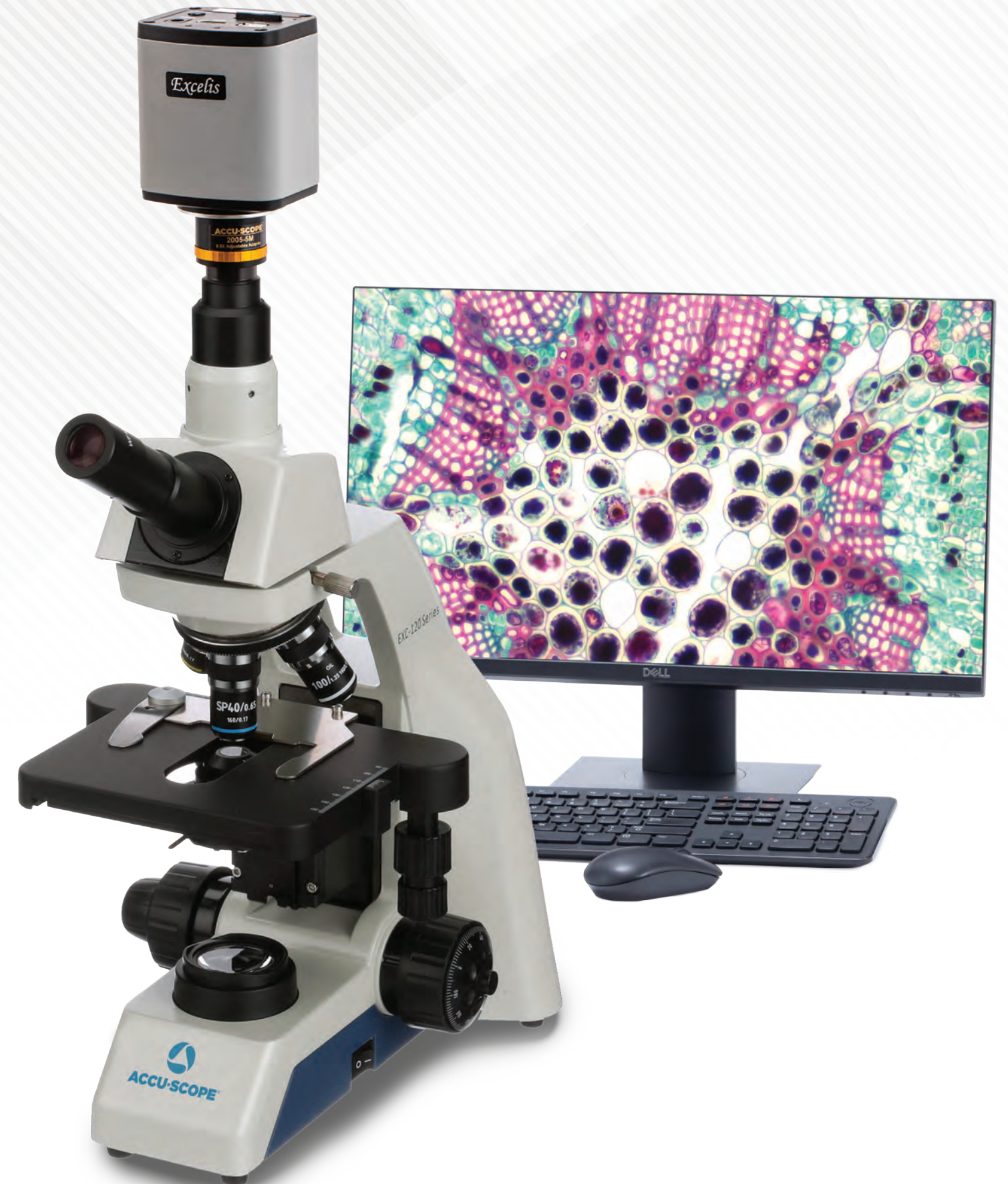
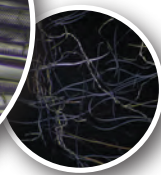
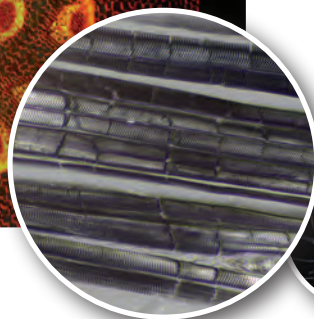
Phase Contrast

Phase contrast observation is available for 10x, 20x, 40x, and 100x magnifications. The turret-style phase contrast condenser contains separate phase annuli that are tuned for each objective. A centering telescope is provided to ensure centration. A green filter provides added contrast.



Simple Polarization

It is easy to add simple polarization to the EXC-120. The rotatable polarizer simply installs on the light well in the base of the frame. The analyzer mounts below the viewing head. Rotate to polarizer until the field is as dark as possible and enjoy the colors!





Choose Your Model



EXC-120



EXC-120-45



EXC-123



EXC-121



EXC-121-V



EXC-121VD
with HD camera

Key Features of the EXC-120



Rackless Stage with
One-Hand Slide Holder



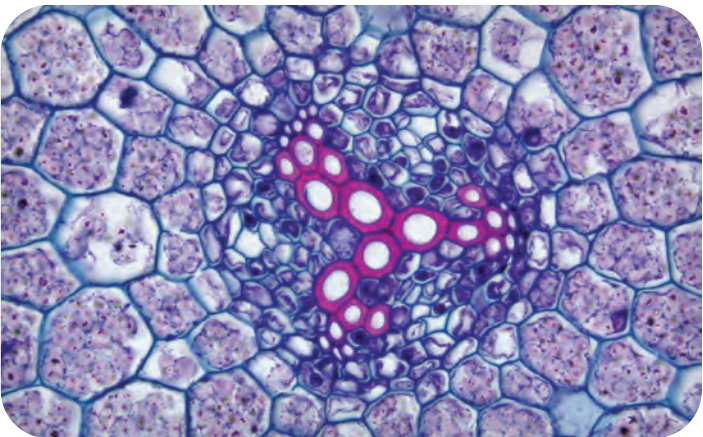
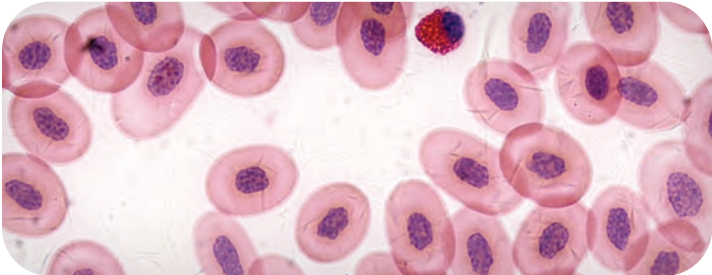
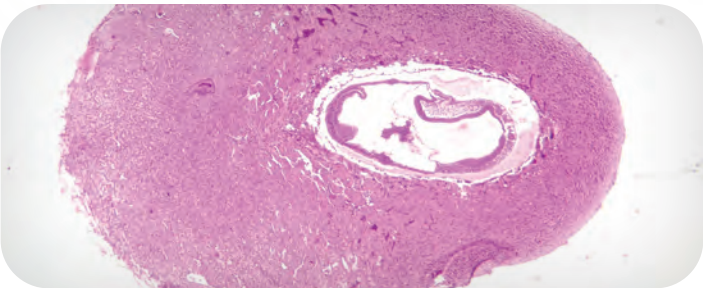
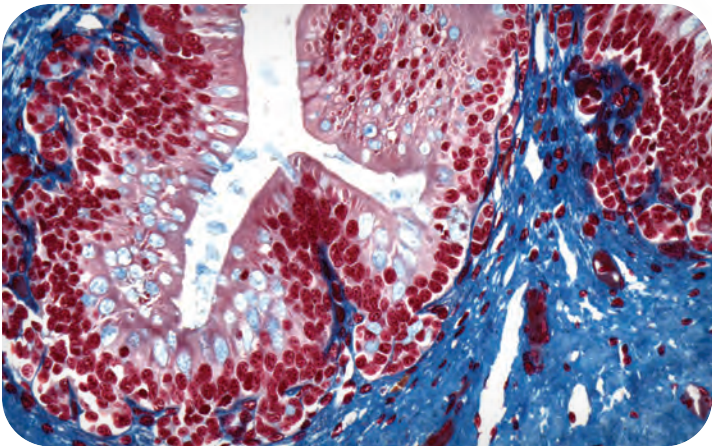
Integrated Cord Wrap



Integrated Carry Handle



Rotatable and "Butterfly"
Eyetubes for Taller Users



EXC-120: Dependable and Trusted Performance

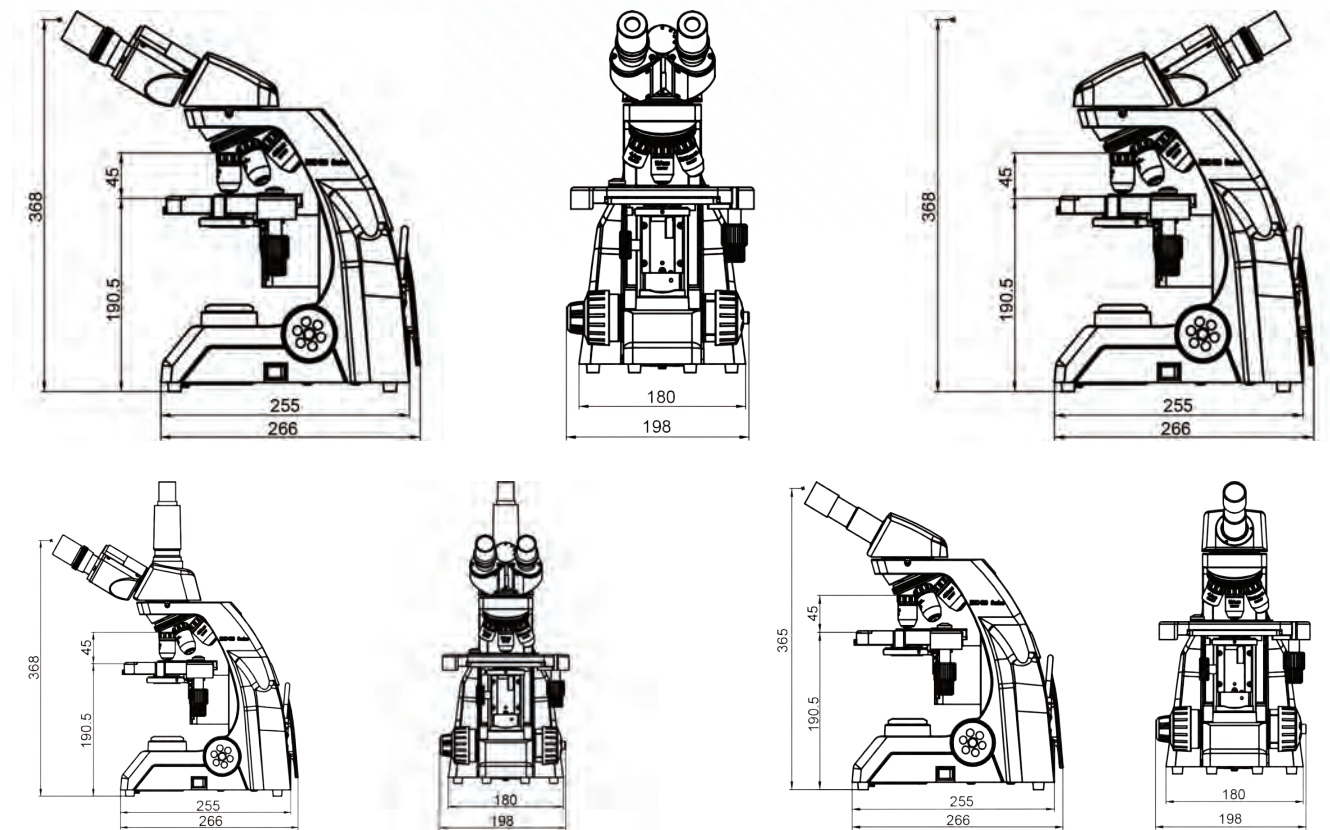
The EXC-120 is engineered for classroom, medical and veterinary applications, with sharp, high contrast objectives, ergonomic operation, and a rugged, die-cast aluminum alloy frame, the EXC-120 will deliver excellent performance through years of heavy use.



- 1. Student-proof eyepieces are locked in to prevent student tampering
- 2. Adjustable diopter setting on binocular and trinocular viewing tubes
- 3. Adjustable interpupillary distance from 48-75mm
- 4. 360° rotatable head with thumbscrew lock for easy and compact storage
- 5. Integrated carry handle
- 6. Cast aluminum alloy frame with built-in focus stop to prevent slide breakage
- 7. Integrated cord wrap for fast, easy storage
- 8. Coaxial coarse and fine focus with adjustable tension and all metal gears
- 9. Rear-facing quadruple nosepiece with rubber grip and positive detents to ensure objective alignment position
- 10. Brilliant 4x, 10x, S-Plan 40xR, 100xR DIN Achromat objectives are standard
- 11. Rackless mechanical stage with scale
- 12. Abbe condenser (NA 1.25) with iris diaphragm, swing-out filter holder and focus knob; phase contrast and darkfield options available
- 13. Variable LED illumination



Dimensional Diagrams



EXC-120 Biological Microscope

SPECIFICATIONS

Optical System	DIN, 160mm, anti-mold/anti-fungus
Viewing Heads	<ul style="list-style-type: none"> • Monocular head, inclined at 30° • Monocular head with vertical camera port, inclined at 30° • Seidentopf Binocular Viewing Head, Inclined at 30°, Interpupillary distance 48-75mm; binocular eyetubes rotate 180° to raise/lower viewing position by 35mm; diopter adjustment on one eyetube • Seidentopf Trinocular Viewing Head, Inclined at 30°, Interpupillary distance 48-75mm; binocular eyetubes rotate 180° to raise/lower viewing position by 35mm; vertical camera port; diopter adjustment on one eyetube
Objectives	<ul style="list-style-type: none"> • Achromat: 4x, 10x, 20x, 60xR*, 100xR* oil • Semi-Plan Achromat: 40xR* • Plan Achromat: 4x, 10x, 20x, 60xR*, 100xR* dry, 100xR* oil, 100xR* water • Phase Contrast Plan Achromat: 10x, 20x, 40xR*, 100xR* (included with phase contrast set) *Spring-loaded
Eyepieces	WF10x/18mm eyepieces; eyepieces lock in to prevent tampering; reticle holder, accepts 19mm reticle; with or without wire pointer (standard in one eyepiece)
Nosepiece	Rear facing, quadruple, ball bearing movement with positive click stops to ensure parcentration
Focusing System	Coaxial coarse and fine focus controls with adjustable tension control; all metal gears
Stand	Cast aluminum alloy; built-in fixed focus stops allow for rapid focusing while protecting specimens; built-in fixed focus stops allow for rapid focusing while protecting specimens; built-in carry handle and cord hanger
Stages	Double layer mechanical stage; smooth, rounded corners; Size: 150mm x 139mm; X-Y movement range of 75mm x 32mm; easy release slide fingers
Condenser	<ul style="list-style-type: none"> • Abbe condenser, N.A. 1.25; Rack and pinion operation; Iris diaphragm; Swing-out filter holder • Turret phase contrast condenser, N.A. 1.25; Iris diaphragm; 10x, 20x, 40x, 100x phase annuli; Green filter; Centering telescope • Oil Darkfield condenser, N.A. 1.25-1.36
Transmitted Illumination	Variable LED illumination; pre-centered; LED lamp rated for 20,000 hours; power supply 110-240v UL listed; optional rechargeable LED base
Observation Methods	Brightfield, Phase contrast Darkfield, Simple polarization
Power Consumption	3W
Weight (approx.)	15lbs (standard binocular configuration)
Dimensions	255mm (L) x 198mm (W) x 368mm (H) (standard binocular configuration)



Copyright © 2022 ACCU-SCOPE Inc. All rights reserved. Printed in the U.S.A.
ACCU-SCOPE Inc. reserves the right to change and improve specifications
without notice due to technological or manufacturing advances.



v103122



100 Lauman Lane, Suite A, Hicksville, NY 11801
Tel: (877) 877-7274 | Fax: (516) 801-2046
Email: Info@nyscopes.com
www.microscopeinternational.com