

SKYE WiFi™

WIFI/USB/ETHERNET/HDMI MICROSCOPY CAMERA

SKYE WiFi Microscopy Cameras deliver fantastic color images and video directly to your mobile device via WiFi signals. Connect multiple mobile devices to the same camera for simultaneous observation via the SKYE View app. Control via Windows PC app is also supported. SKYE WiFi cameras set the standard for convenience, collaboration and connectivity.



Key Features



12MP
CMOS



SONY
IMX412



30
fps



1.55 µm



COLOR



Sensor
Size

1/2.3"



CONNECTIVITY



COMPATIBLE



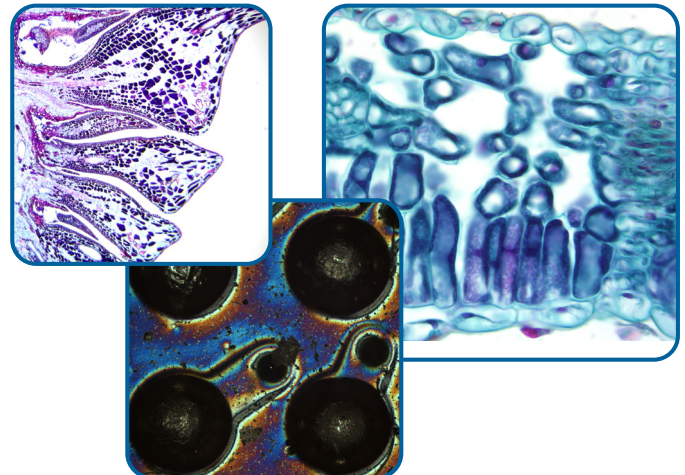
COMPATIBLE



COMPATIBLE

Recommended Applications

- EDUCATION
- TRAINING
- DEMONSTRATION
- INDUSTRIAL
- COLLABORATION
- DOCUMENTATION



Empowering Discovery. Advancing Results.



WIFI/USB/ETHERNET MICROSCOPY CAMERA

Key SKYE View 3 App Features

- Scan QR code to connect to camera
- Calibrate, measure, annotate images
- Capture still images and video
- Control exposure, gain, white balance, contrast, saturation and sharpness
- 1-click export to mobile device album for sharing via social media, SMS, email, etc.



Uses a standard C-mount
(0.35x recommended)



Shown on an EXC-350

- 12MP CMOS camera
- 5GHz WiFi, USB 2.0, Ethernet
- HDMI port to view live images directly on a monitor
- 30fps at 4000x3000; up to 13 simultaneously connected devices (PCs, mobile devices)
- WiFi compatibility with Windows, iOS and Android (USB and Ethernet connection for Windows only)
- Use with SKYE View 3 apps

CAMERA SPECIFICATIONS

Model	AU-SKYE-WIFI3
Sensor	SONY IMX412 CMOS
Sensor Size	1/2.3" (0.5x c-mount adapter recommended)
Resolution (max)	12MP (4000x3000)
Pixel Size	1.55µm
Frame Rate (max)	30fps @ 4000x3000
Shutter	Rolling
Exposure Time	10µs-33ms; auto or manual
White Balance	Real-time automatic; manual Red/Blue adjustment
AD Conversion	12-bit
Spectral Response	380-650nm
Image/Video Format	Image Format: JPG, BMP, PNG, TIF Image Resolution: 4000x3000, 3840x2160 Video Format: MP4 Video Resolution: 3840x2160
Software Interface	SKYE View 3 (Windows, Android, iOS)
Image Transfer	WiFi: 5GHz IEEE802.11ac protocol; USB 2.0; Ethernet
Power	DC 5V 2A

CONNECTIVITY SPECIFICATIONS

Wireless Standards	5GHz, IEEE802.11ac
Power	WiFi/Ethernet modes: 5V 2A power adapter PC mode: Direct current via USB cable connected to PC
PC Software Compatibility	Recommended minimum PC configuration: Windows 10, 64-bit and above (Windows PC only; Mac OS not supported) I5 (8th gen.) processor 32GB hard disk space, or more 16GB RAM, or more Graphics card with core display Wireless: Internal wireless network card IEEE802.11ac USB: USB 2.0 or higher Internet connection (software download) Network card (for Ethernet operation) 10/100/1000Mb auto adaptive
iOS Compatibility	iOS 11.0 or higher CPU dual-core 1.8Ghz or above 2GB RAM or more 32GB storage space or more Supports wireless protocol 5GHz WiFi IEEE802.11ac
Android Compatibility	Android system 7.0 or higher CPU dual-core 1.7Ghz or higher 3GB RAM or more 32GB storage or more Supports wireless protocol 5GHz WiFi IEEE802.11ac



Copyright © 2023 ACCU-SCOPE Inc. All rights reserved. Printed in the U.S.A. ACCU-SCOPE Inc. reserves the right to change and improve specifications without notice due to technological or manufacturing advances.



v080923

Microscope Experts since 1979



100 Lauman Lane, Suite A, Hicksville, NY 11801
Tel: (877) 877-7274 | Fax: (516) 801-2046
Email: Info@nyscopes.com
www.microscopeinternational.com