

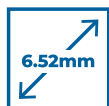
Excelis EC50

ROUTINE MICROSCOPY CAMERA

Robust, affordable 5MP color camera for routine microscopy imaging. USB 2.0 connectivity and advanced CaptaVision+ imaging software for a wide range of applications.



Key Features



ROLLING



COLOR



1/2.8"



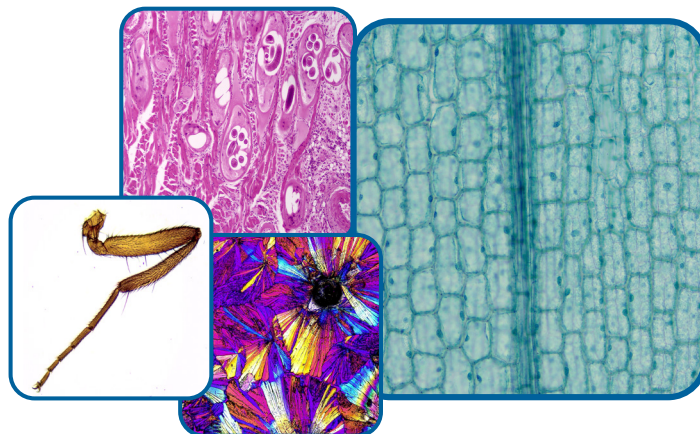
USB 2.0


MAC & PC
COMPATIBLE

Recommended Applications

EDUCATION
TRAINING
CLINICAL
VETERINARY

INSPECTION
DEMONSTRATION
DOCUMENTATION



Empowering Discovery. Advancing Results.

Excelis EC50

ROUTINE MICROSCOPY CAMERA

Key CaptaVision+ Software Features

- Intuitive & customizable user interface
- Capture still images, record live and time lapse video
- Simple calibration and measurements
- Advanced control of exposure, gain, color balance, etc.
- Powerful image processing tools
- Intelligent flat field correction
- Flexible report generation and data export



CAMERA & SOFTWARE SPECIFICATIONS

Model	AU-EC50
Sensor/Model	Sony IMX335LQN-C, CMOS, color
Sensor Size	1.2/8"; 0.35x or 0.5x (recommended) C-mount adapter
Resolution	2560 (H) x 1920 (V)
Pixel Size	2.0µm x 2.0µm
Frame Rate	29fps @ 2560 x 1920
Shutter Mode	Rolling
Image Transmission	USB 2.0
Exposure Time	1µs - 1s941ms
Automatic Settings	Exposure, Color Scale, White Balance
Manual Settings	Exposure, Gain, Noise Reduction, Gamma, Flat Field Correction
Color Temperature	2000-15000K
ADC Depth	12Bit
Operating Temperature & Humidity	0-60°C
Data Interface	USB 2.0
PC Imaging Software (see additional features at right)	<p>CaptaVision+ Imaging Software for PC and MacOS</p> <p>Advanced Camera Controls: live/still image measurement and annotation; flat field correction; video record; delay capture; ROI and mask; fluorescence image settings; fluorescence multi-color channel merge</p> <p>Image Types: TIF, JPG, PNG, DICOM</p> <p>TWAIN driver available</p>
System Software Compatibility	<p>Windows 7, 8, 10, 11 (64-bit recommended)</p> <p>Mac OSX 10.4 and higher</p> <p>Minimum System Recommendations: intel i5 or better (Quad Core or better); 16GB RAM or more; USB 2.0 high-speed port minimum</p>
Camera Size/Weight	68 x 68 x 42.5mm / 236g



Copyright © 2022 ACCU-SCOPE Inc. All rights reserved. Printed in the U.S.A. ACCU-SCOPE Inc. reserves the right to change and improve specifications without notice due to technological or manufacturing advances.



100 Lauman Lane, Suite A, Hicksville, NY 11801
 Tel: (877) 877-7274 | Fax: (516) 801-2046
 Email: Info@nyscopes.com
www.microscopeinternational.com



v090822