

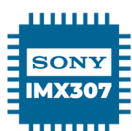
Excelis HD

HIGH DEFINITION MICROSCOPY CAMERA

The *Excelis™* HD camera delivers true, real-time 1080P HD images at 60fps, captures 6MP photos and records live video in full HD. On-board software provides measurement, annotation, comparison and control over exposure, gain and other camera settings without a computer. The AU-600-HDS version includes an 11.6" HD monitor that can be mounted directly to the camera, for easy viewing and a space saving design.

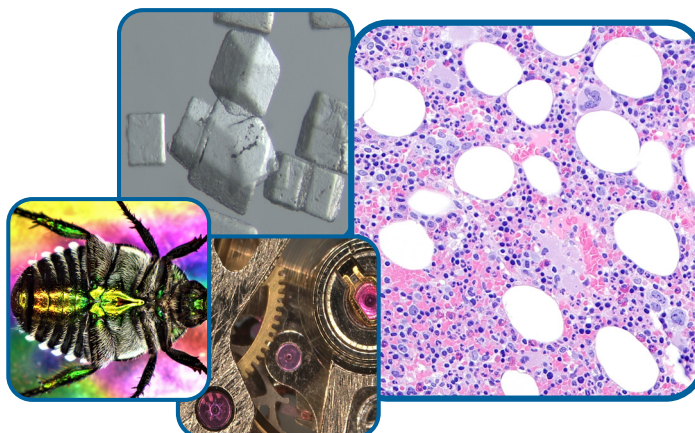


Key Features



Recommended Applications

- Pathology
- Clinical Lab
- Biology
- Education
- Inspection
- Training
- Demonstration
- Documentation



Empowering Discovery. Advancing Results.

Excelis HD Series

HIGH DEFINITION MICROSCOPY CAMERA

On-Board Software Features

No PC required to start imaging!

Camera control including:

- Auto and manual exposure
- White balance (lock or auto)
- Color temperature

Capture images and videos to SD card (included)

Built-in tools:

- Calibration, measurement and annotation
- Horizontal/vertical flip
- Zoom in/out
- Scale bar
- Crossline Display
- Image browser
- Image comparison



Model AU-600-HDS
shown on EXC-400
microscope



CAMERA & SOFTWARE SPECIFICATIONS

Model	AU-600-HD (no monitor) AU-600-HDS (w/11.6" monitor)
Sensor	Sony IMX307, CMOS, color
Sensor Size	1/2.8", 0.5x or 0.35x C-mount (recommended)
Live Resolution	1920 (H) x 1080 (V)
Frame Rate	HDMI: 60fps; USB 2.0: 30fps
Image Capture	6MP (3264x1840) to highspeed 8GB SD card (included); or USB 2.0 to PC
Video Capture	HDMI: 1080p, 60fps, 30fps to SD Card USB 2.0: 6MP, 30fps to PC or Mac
Exposure Time	Auto; 0.001 sec - 10.0 sec
White Balance	Auto / area / manual
Settings	Gain, gamma, saturation, brightness, sharpness
Built-in Software	Cloud 1.0
PC and Mac Imaging Software (see additional features at right)	CaptaVision+ Imaging Software for PC and Mac OS Advanced Camera Controls: live/still image measurement and annotation; scale bar, flat field correction; extended depth of focus (focus stacking); image stitching; HDR (high dynamic range) function Image Types: JPG, PNG, TIF & DICOM (DICOM not available for Mac) TWAIN driver available
System Software Compatibility	Windows 7, 8, 10 & 11 (64-bit recommended) Mac OSX 10.4 and higher System Recommendations: intel i5 or better (Quad Core or better); 16GB RAM or more; USB 2.0 high-speed port minimum (USB 3.0 recommended)

MONITOR SPECIFICATIONS

Monitor (optional)	Mountable 11.6" HD Display Contrast: 1000:1; Dot Pitch: 0.1338mm
Input Modes	AC power, HDMI



Copyright © 2022 ACCU-SCOPE Inc. All rights reserved. Printed in the U.S.A.
ACCU-SCOPE Inc. reserves the right to change and improve specifications without notice due to technological or manufacturing advances.



100 Lauman Lane, Suite A, Hicksville, NY 11801
Tel: (877) 877-7274 | Fax: (516) 801-2046
Email: Info@nyscopes.com
www.microscopeinternational.com

v092722