

# SKYE<sup>2</sup>WiFi™

WiFi & USB MICROSCOPY CAMERA

SKYE WiFi Microscopy Cameras deliver fantastic color images and video directly to your mobile device via WiFi signals without the need for bulky computers. Connect multiple mobile devices to the same camera for simultaneous observation via the SKYE View app. Control via Windows PC app is also supported. SKYE WiFi cameras set the standard for convenience and collaboration.

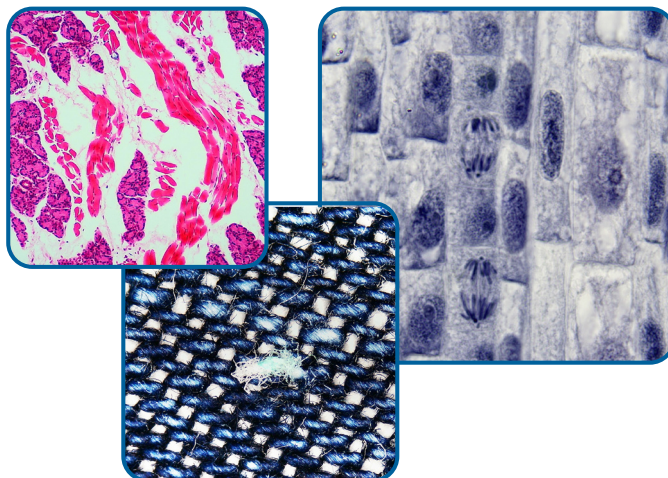


## Key Features



## Recommended Applications

- EDUCATION
- TRAINING
- DEMONSTRATION
- INDUSTRIAL
- COLLABORATION
- DOCUMENTATION



***Empowering Discovery. Advancing Results.***



# Key SKYE View2 App Features

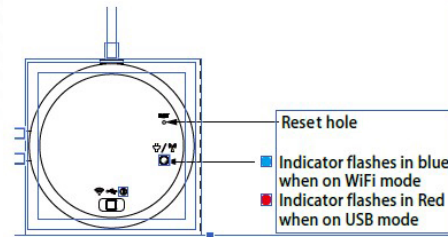
- Scan QR code to connect to camera
- Calibrate, measure, annotate images
- Capture still images and video
- Control exposure, gain, white balance, contrast, saturation and sharpness
- 1-click export to mobile device album for sharing via social media, SMS, email, etc.

Uses a standard C-mount  
(0.35x recommended)



- 5MP CMOS Camera
- 2.4G/5G WiFi or USB 2.0 (switchable)
- 30 fps with up to 13 simultaneous connections to a single camera
- High sensitivity antenna for long transmission
- WiFi compatibility with Windows, iOS and Android (USB connection for Windows ONLY)
- SKYE View 2 imaging software

| CAMERA SPECIFICATIONS                       |  |
|---|--|
| Model                                       | AU-500-WIFI2   |
| Sensor                                      | OnSemi AR0521 color CMOS   |
| Sensor Size                                 | 1/2.5" (5.70mm (H) x 4.28mm (V), Diagonal 7.13mm); 0.35x C-mount recommended   |
| Maximum Resolution                          | 2592x1944 (5,038,848 pixels)   |
| Pixel Size                                  | 2.2µm x 2.2µm  |
| Maximum Transmission WiFi or USB Frame Rate | 30fps @ 2592x1944, 1920x1080, 1024x768, 640x480  |
| Image/Video Capture                         | Image Format: JPG, BMP, PNG, TIFF, PDF<br>Image Resolution: 2592x1944, 1920x1080, 1024x768, 640x480<br>Video Format: MJPG format, AVI file<br>Video Resolution: 1920x1080, 1024x768, 640x640 |
| Exposure Mode                               | Rolling Shutter  |
| Exposure Compatibility                      | Real-time auto, Single auto, Manual Adjustment   |
| White Balance                               | Real-time auto, Single auto, Manual Adjustment   |
| ADC   | 12-bit, 8-bit RGB to PC  |
| SNR (signal noise ratio)                    | 38.1dB   |
| Spectral Characteristics                    | 380-650nm (during daytime mode)  |
| Binning Modes                               | 1x1, 2x2   |
| Software Interface                          | DirectShow   |
| Image Transfer (WiFi)                       | 802.11ac (Standard)  |
| Image Transfer (USB)                        | Micro USB Interface, USB 2.0 DC5.0V 500mA  |



| CONNECTIVITY SPECIFICATIONS |  |
|-----------------------------|--|
| Wireless Standards          | 2.4G/5G: IEEE 802.11ac   |
| Operating Frequency Range   | 2.4G: 2.400-2.4835Ghz<br>5G: 5.180-5.825Ghz  |
| Power                       | WiFi: DC 5V 2A power cord<br>USB: Direct-current 5V, power by USB Cable  |
| PC Software Compatibility   | Windows 7, 8, 10 & 11 (32 & 64 bit)<br>(PC only, Mac OS not supported)<br>System Requirements: i7 Quad Core or higher; 8GB memory or more; 10GB hard disk free space; standalone graphics card (NVIDIA GPU)<br><br>WiFi: Internal wireless network card IEEE 802.11ac<br>USB: USB 2.0 or higher (Software Installation) or Internet connection (download from website) |
| iOS Compatibility           | iOS 11.0 or higher<br>Support 5G WiFi (11ac) protocol  |
| Android Compatibility       | Android 5.0 or higher<br>Dual-core processor 1.7GHz or higher<br>RAM memory: 3GB or more<br>Storage ROM: 8GB or more<br>Support 5G WiFi (11ac) protocol  |