

ACCU-CAM WiFi

WIFI/USB MICROSCOPY CAMERA

The ACCU-CAM WiFi Microscopy Camera delivers excellent color images and video directly to your mobile device via WiFi signals and the AccuView mobile app -- no need for a computer. Use the USB cable to connect to a Windows PC or Mac and control the camera via AccuView or AccuView LITE software. ACCU-CAM WiFi cameras provide exceptional convenience and value.

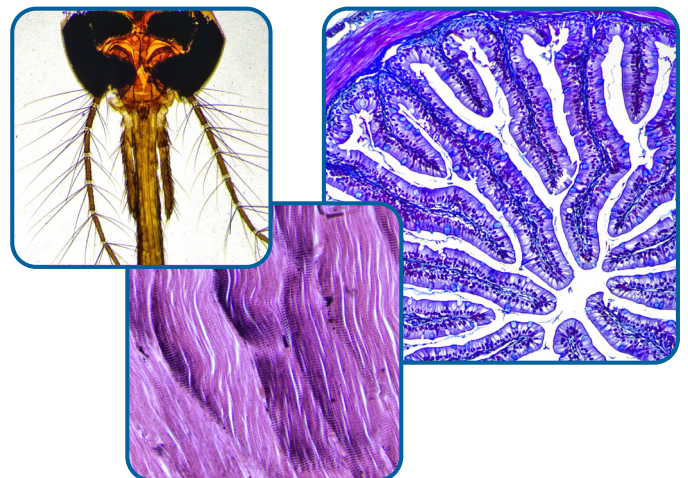


Key Features



Recommended Applications

- EDUCATION
- DEMONSTRATION
- TRAINING
- HOBBY



Empowering Discovery. Advancing Results.

ACCU-CAM WiFi

WiFi/USB MICROSCOPY CAMERA

Key AccuView Software Features

- Intuitive user interface
- Powerful image processing tools
- Calibrate, measure and annotate
- Image stitching (requires mechanical stage)
- Extended Depth of Focus
- Android, iOS, Windows and MacOS* versions (try AccuView LITE for streamlined performance)

*AccuView LITE only

- 2.1 MP CMOS camera
- 2.4GHz WiFi or USB 2.0
- Up to 50fps with up to 3 simultaneous WiFi connections (1 connection recommended)
- WiFi compatibility with Windows, iOS and Android (USB connection for Windows or MacOS* only)
- AccuView imaging software and apps

*requires AccuView LITE



ACCU-CAM WIFI shown on CAT# EXC-103 microscope



Uses a standard C-mount (0.35x recommended)

CAMERA SPECIFICATIONS

Model	AU-AC-WIFI
Sensor	SONY IMX307 Color CMOS
Sensor Size	1/2.8", 5.57mm (H) x 3.13mm (V), Diagonal 6.46mm; 0.35x camera adapter recommended
Resolution	1920 x 1080
Pixel Size	2.9µm x 2.9µm
Frame Rate	50fps maximum via WiFi or USB
Image/Video Capture	Image format: JPG Video format: MJPEG (H.264 codec)
Data Transmission	Automatic switching between WiFi mode and USB mode
Exposure Mode	Automatic or manual
White Balance	Automatic, whole area, manual color temperature adjust
ADC	12-bit
Power	WiFi mode: USB DC 5V/1A adapter USB mode: power through USB from PC

CONNECTIVITY SPECIFICATIONS

Wireless Standards	2.4GHz, IEEE802.11b/g/n
PC & Mac Imaging Software <i>(see additional features at right)</i>	AccuView Imaging Software for Windows and MacOS Advanced Camera Controls: live/still image measurement and annotation; flat field correction; extended depth of focus (focus stacking); image stitching (requires mechanical stage) Image Types: TIF, JPG, PNG TWAIN and DirectShow plugins available
System Software Compatibility	Windows 7, 8, 10, 11 (64-bit recommended) Mac OSX 10.4 and higher Minimum System Recommendations: Intel i5 or better (Quad Core or better); 4GB RAM or more; USB 2.0 high-speed port minimum
iOS Compatibility	iOS 11.0 or higher Supports 2.4G WiFi (11b/g/n) protocol
Android Compatibility	Android 5.0 or higher Dual-core processor 1.7GHz or higher RAM memory: 3GB or more Storage RAM: 8GB or more Supports 2.4G WiFi (11b/g/n) protocol



Copyright © 2023 ACCU-SCOPE Inc. All rights reserved. Printed in the U.S.A. ACCU-SCOPE Inc. reserves the right to change and improve specifications without notice due to technological or manufacturing advances.



100 Lauman Lane, Suite A, Hicksville, NY 11801
Tel: (877) 877-7274 | Fax: (516) 801-2046
Email: Info@nyscopes.com
www.microscopeinternational.com



v072423